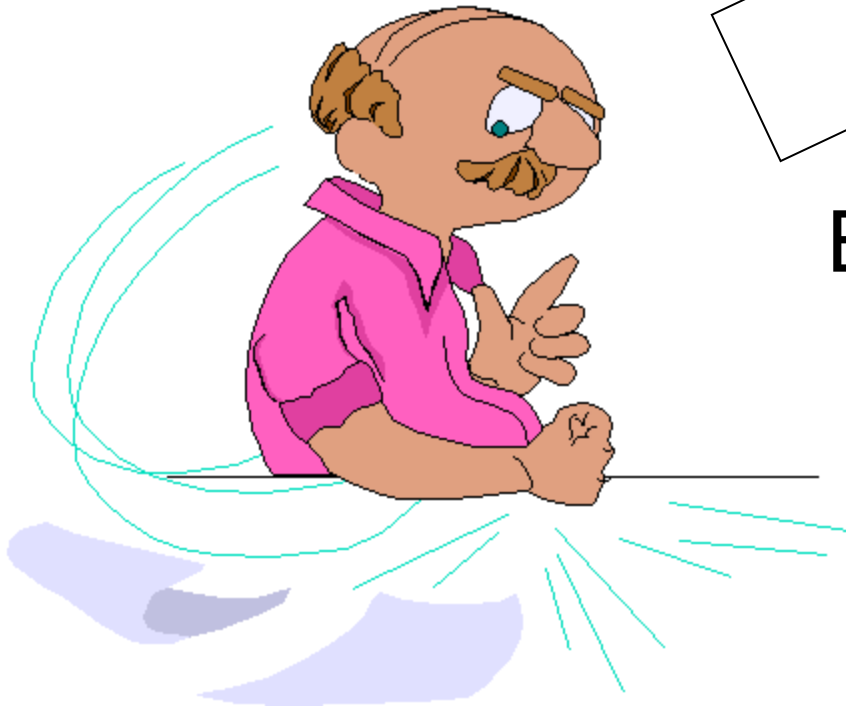


Building “Bread and Butter” hulls **Part Deux** Way



By: John Cheevers

~~04/05/2016~~

~~11/12/2022~~

05/13/2023

Last time.....Bread and Butter faired hull



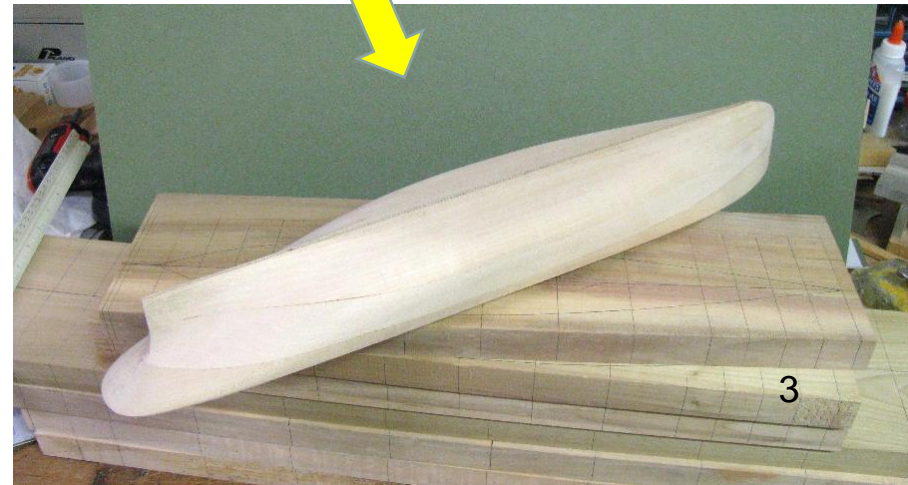


You started with a hunk of wood

Added
Sweat

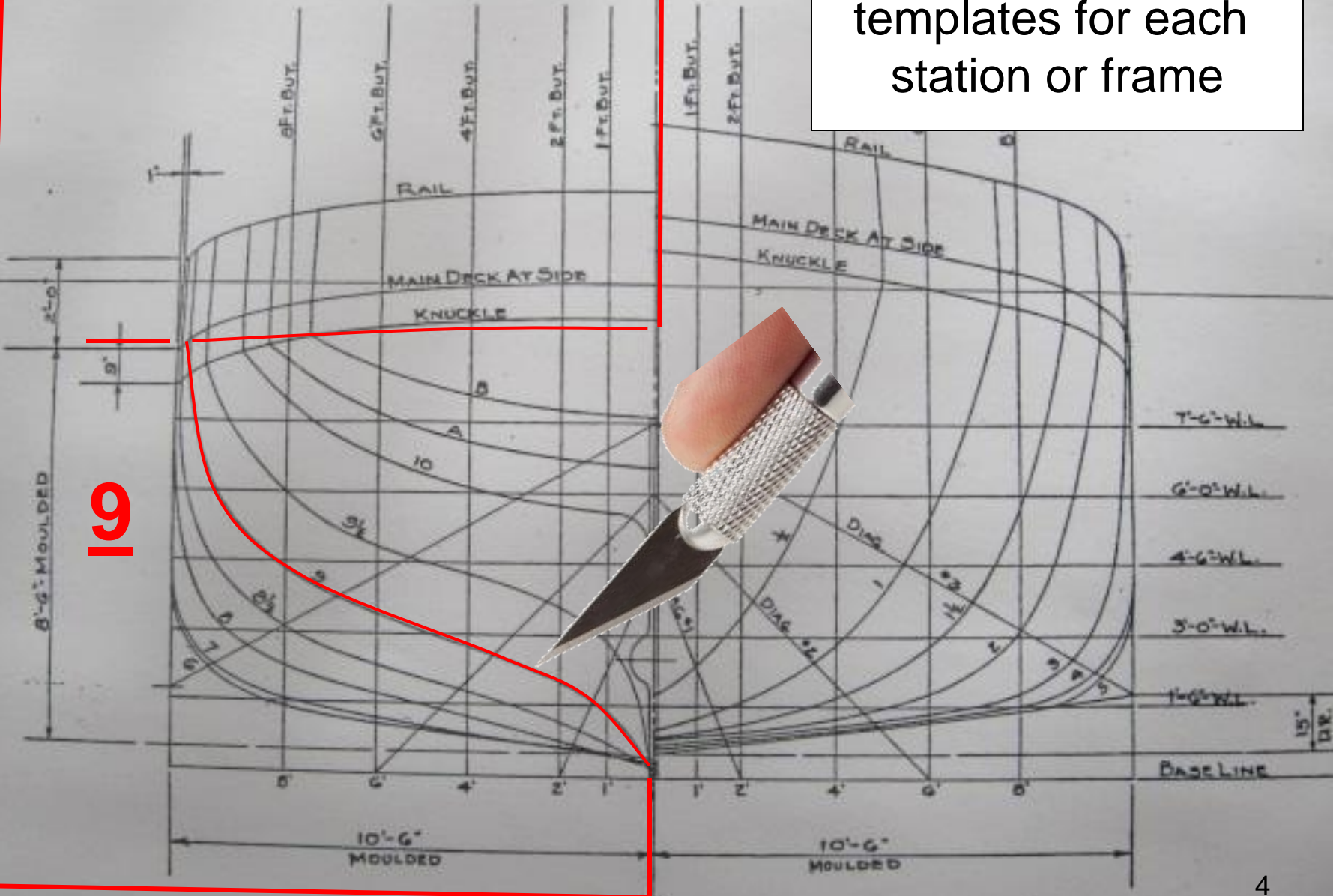


And removed
everything that is
not the hull



You needed templates for each station or frame

19



This time.....

A Bread and Butter Chine Hull

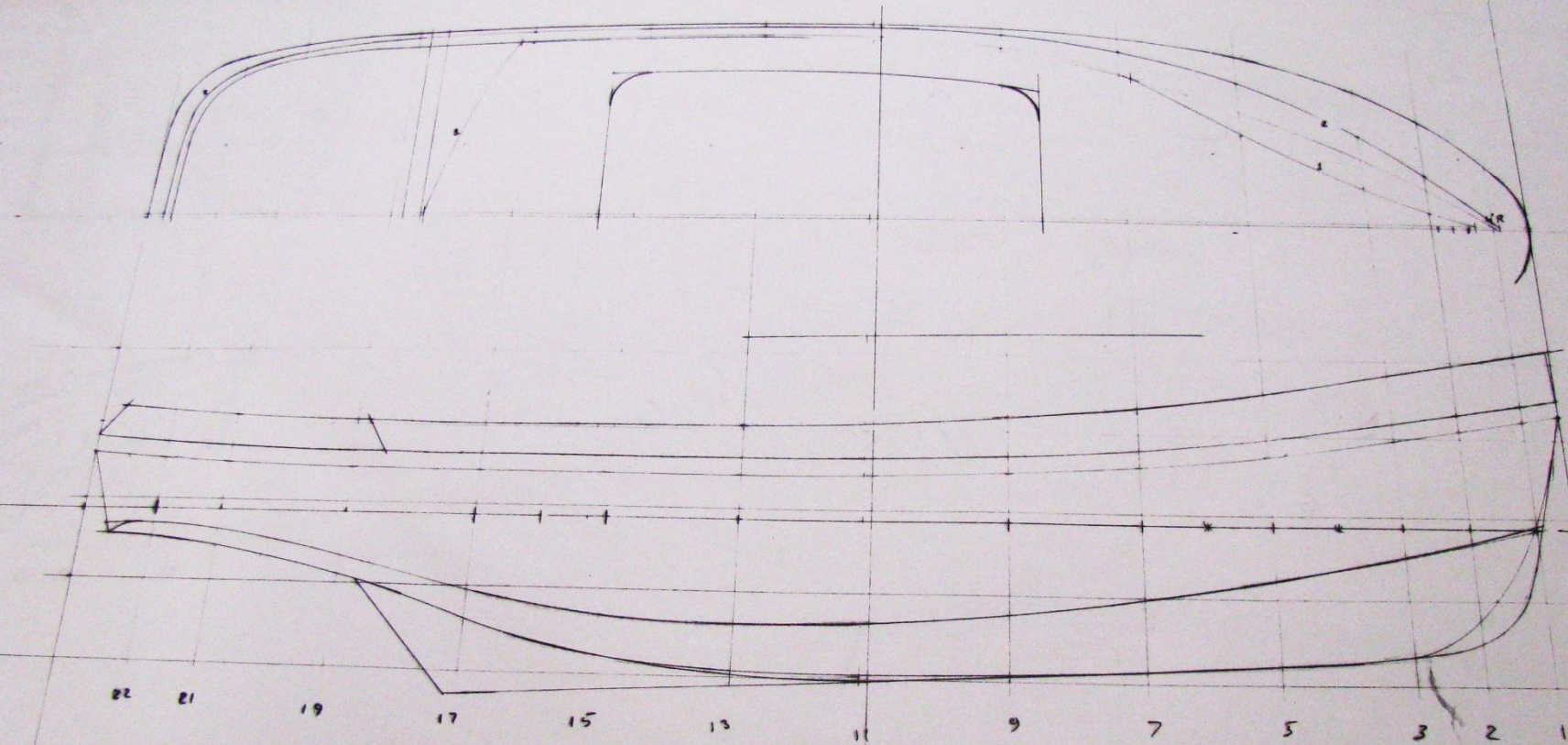
No Templates required
.....almost



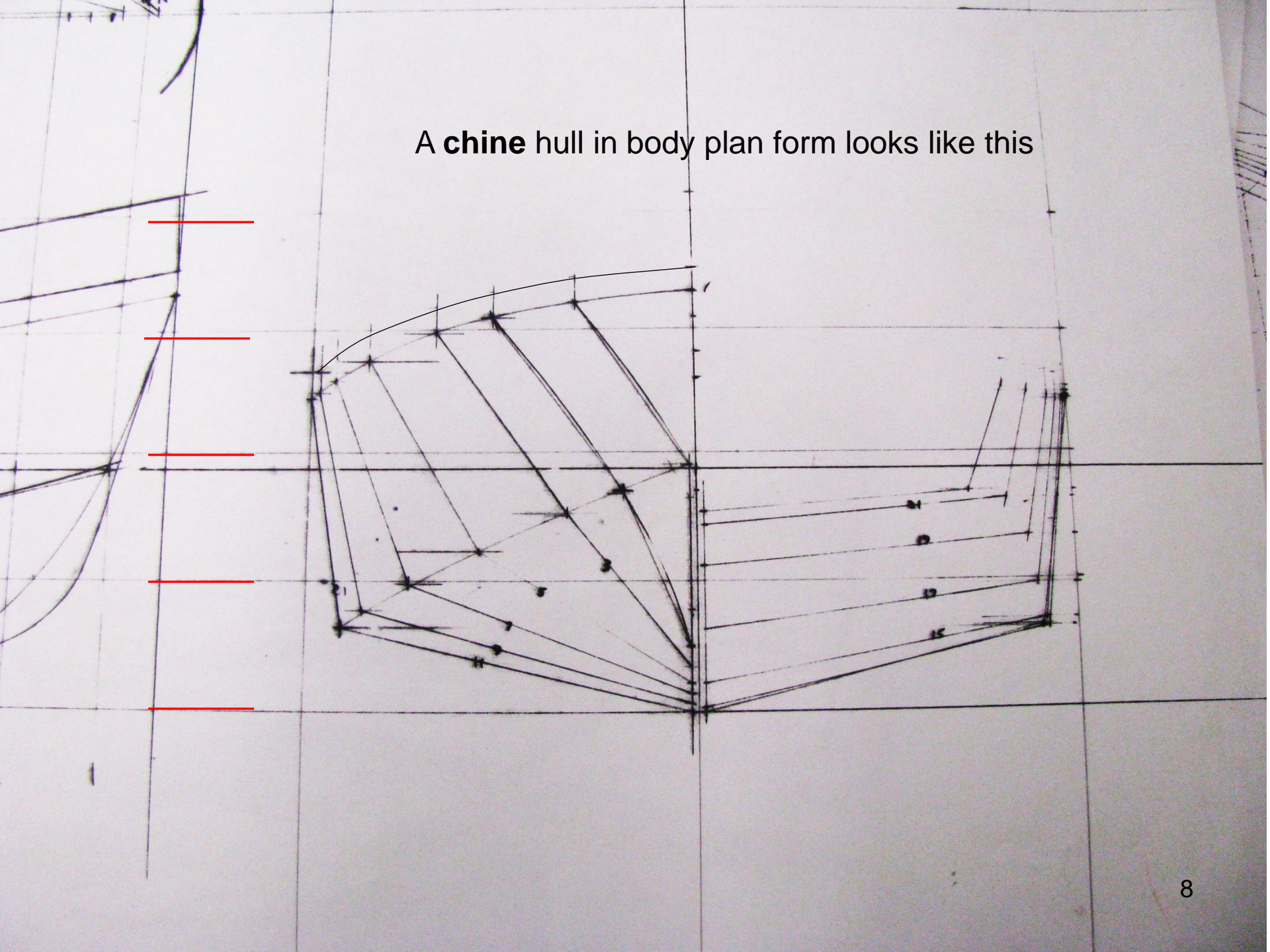
A **chine** in boat design is a sharp change in angle in the cross section of a hull. The chine typically arises from the use of sheet materials (such as sheet metal or marine ply) as the mode of construction.



A **chine** hull in lines plan form looks like this



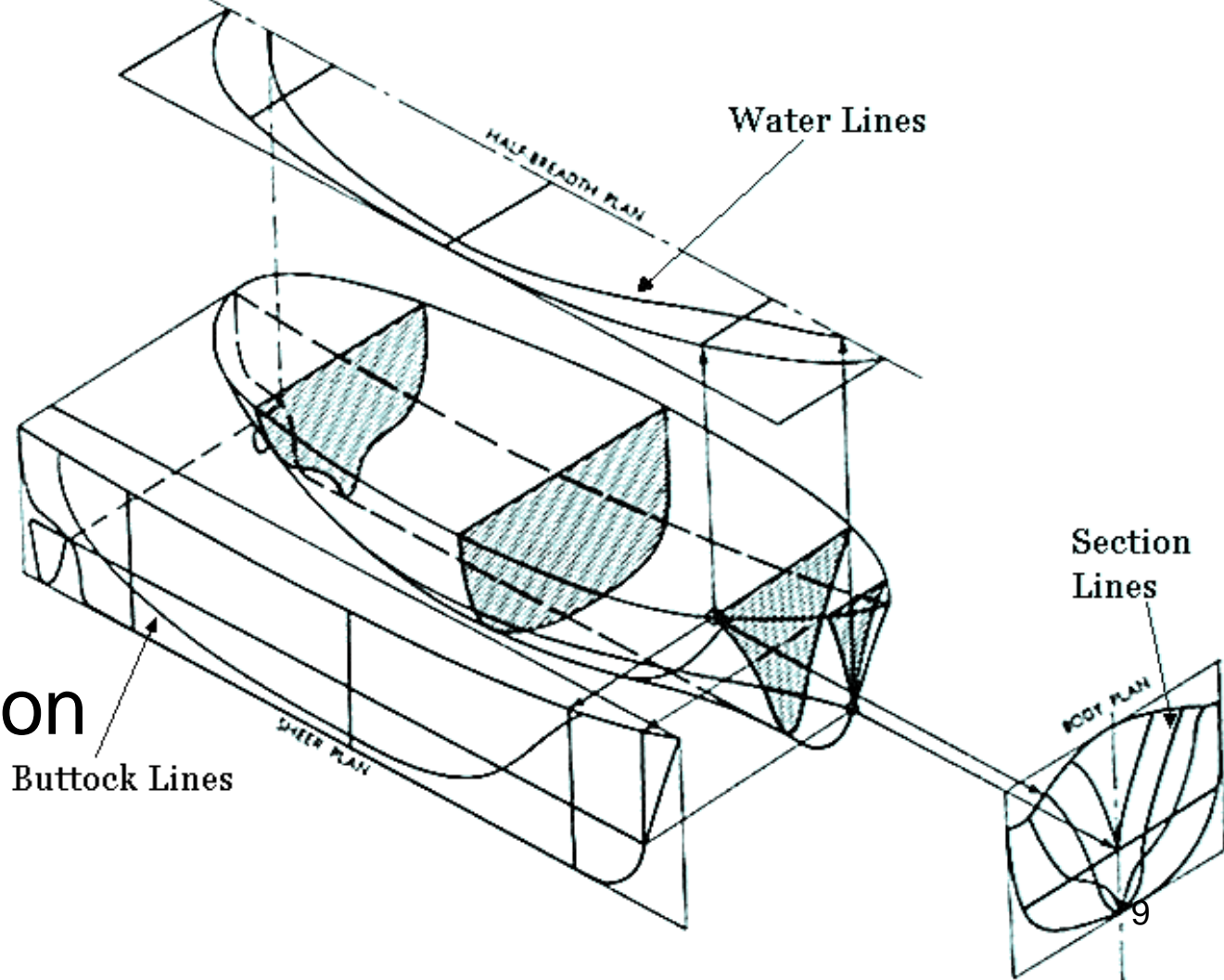
A **chine** hull in body plan form looks like this



“ Reference ”

Planes and Lines

- Citation
- Exact
- Source
- Trusted
- Fiducial
- Registration



Same layout tools and stuff



Only this time we will add a spline to the mix...

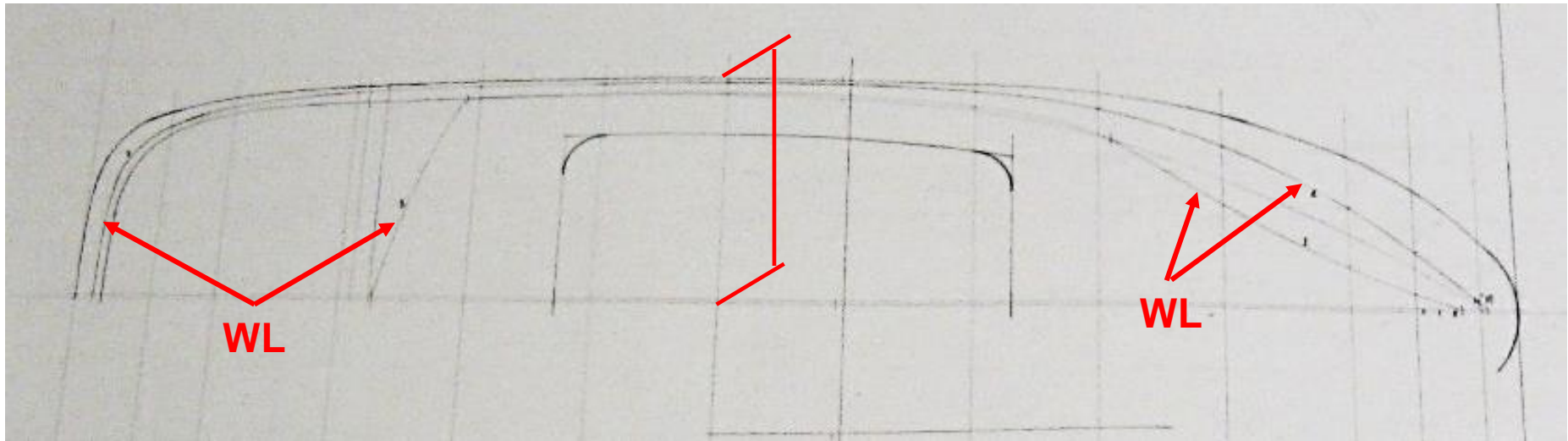


Slices - or Lifts

- Rough cut lumber (length/width)
- Join one edge (long side)

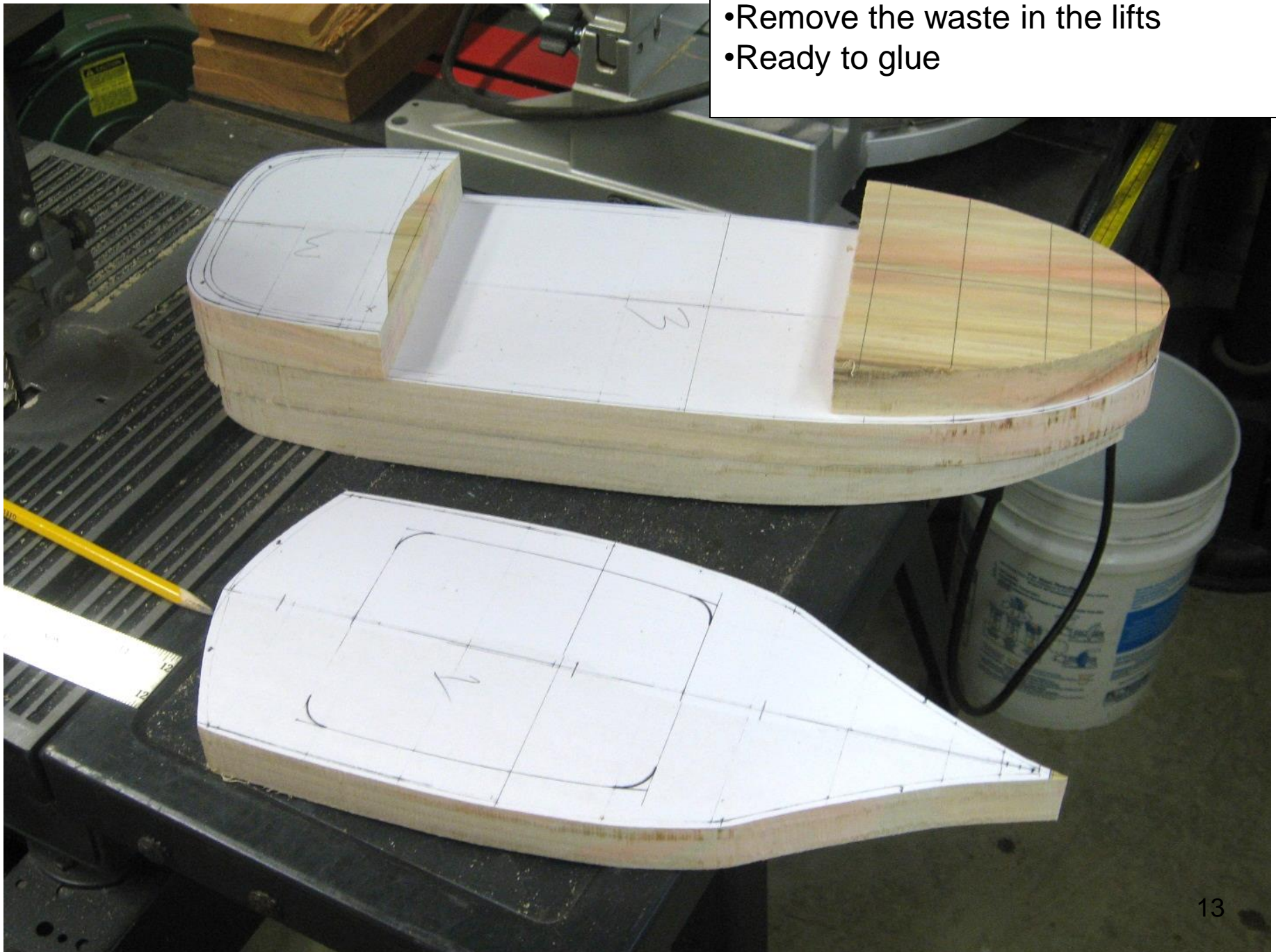


Pick up deck half-widths,
to spot on the waterline lifts

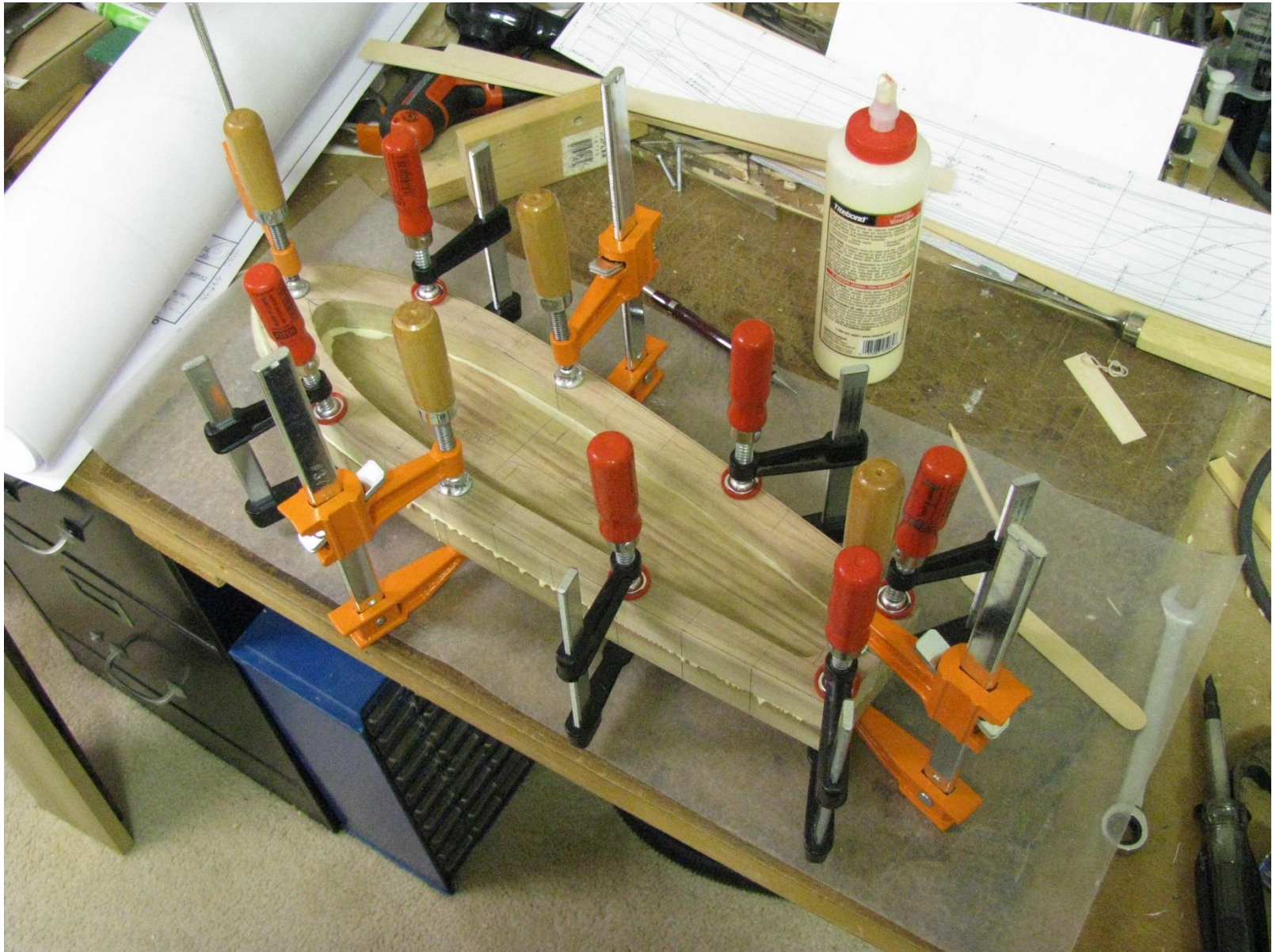


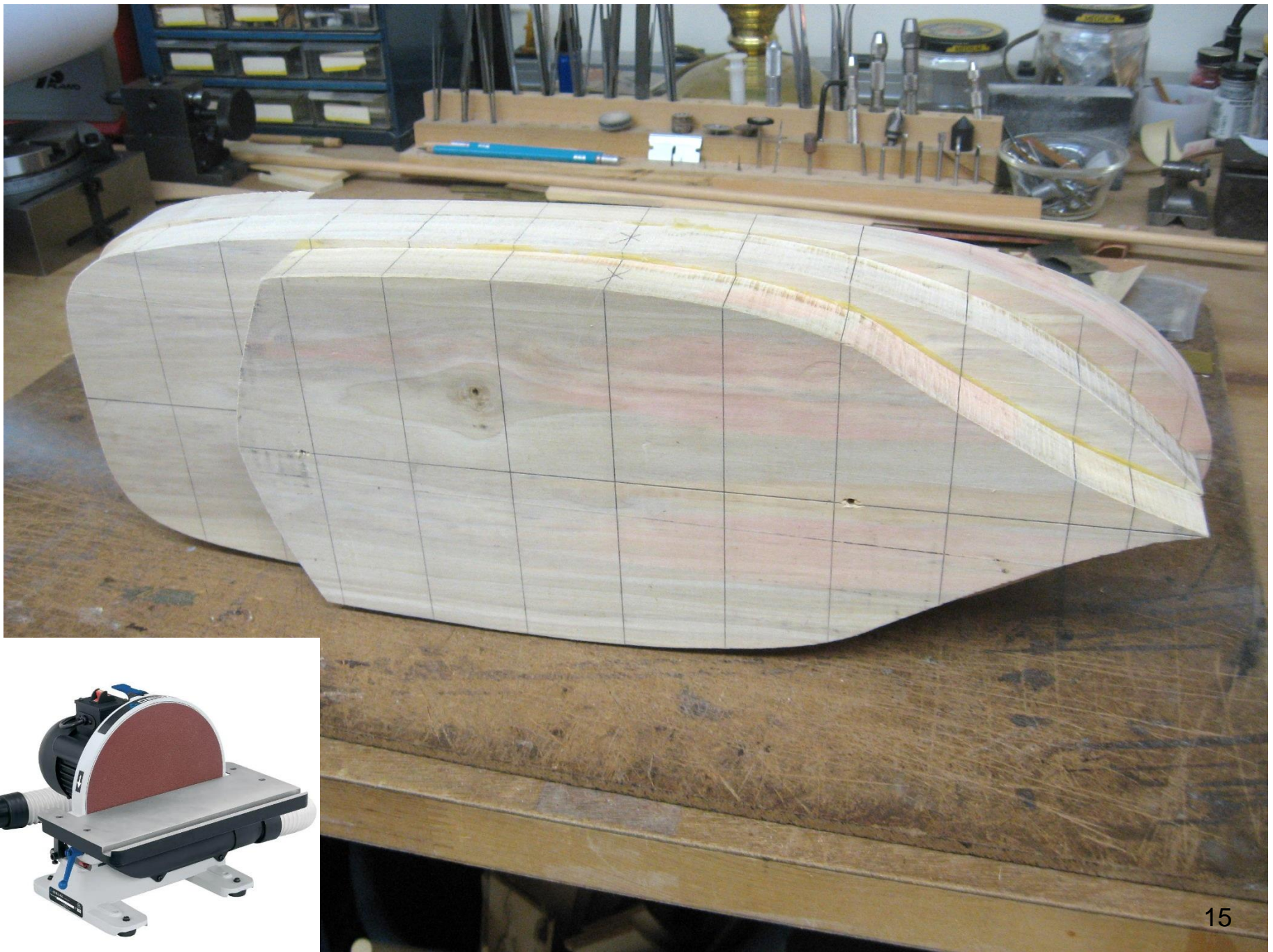
Or make copies of the plan

- Remove the waste in the lifts
- Ready to glue

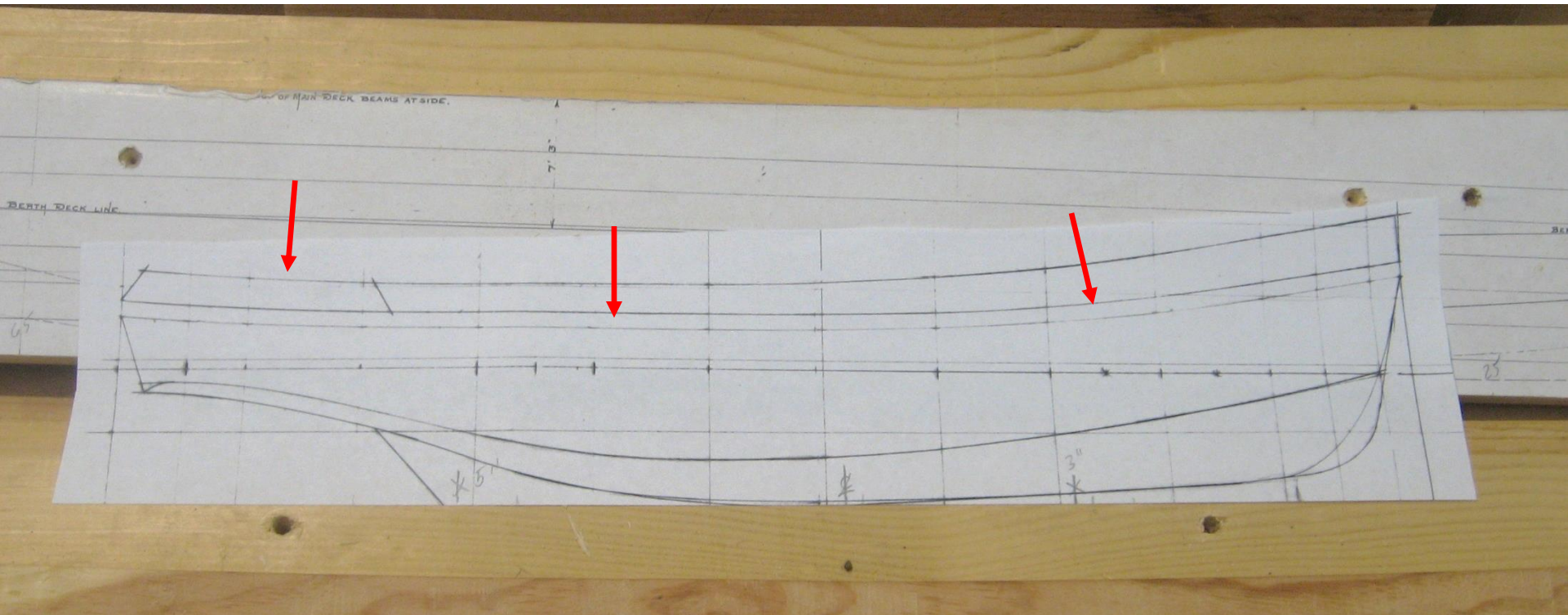


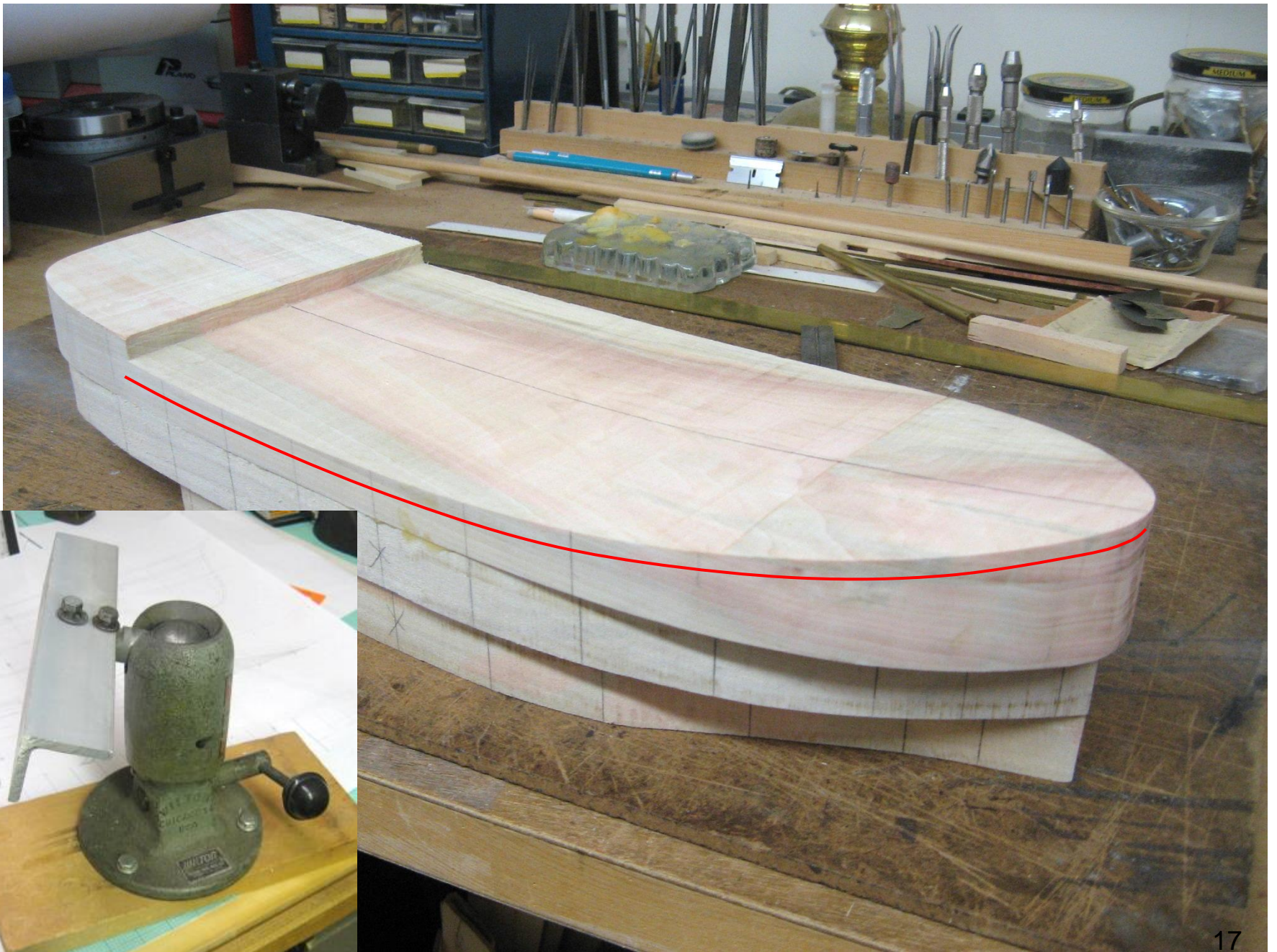
Only use enough pressure to get even squeeze out . . .



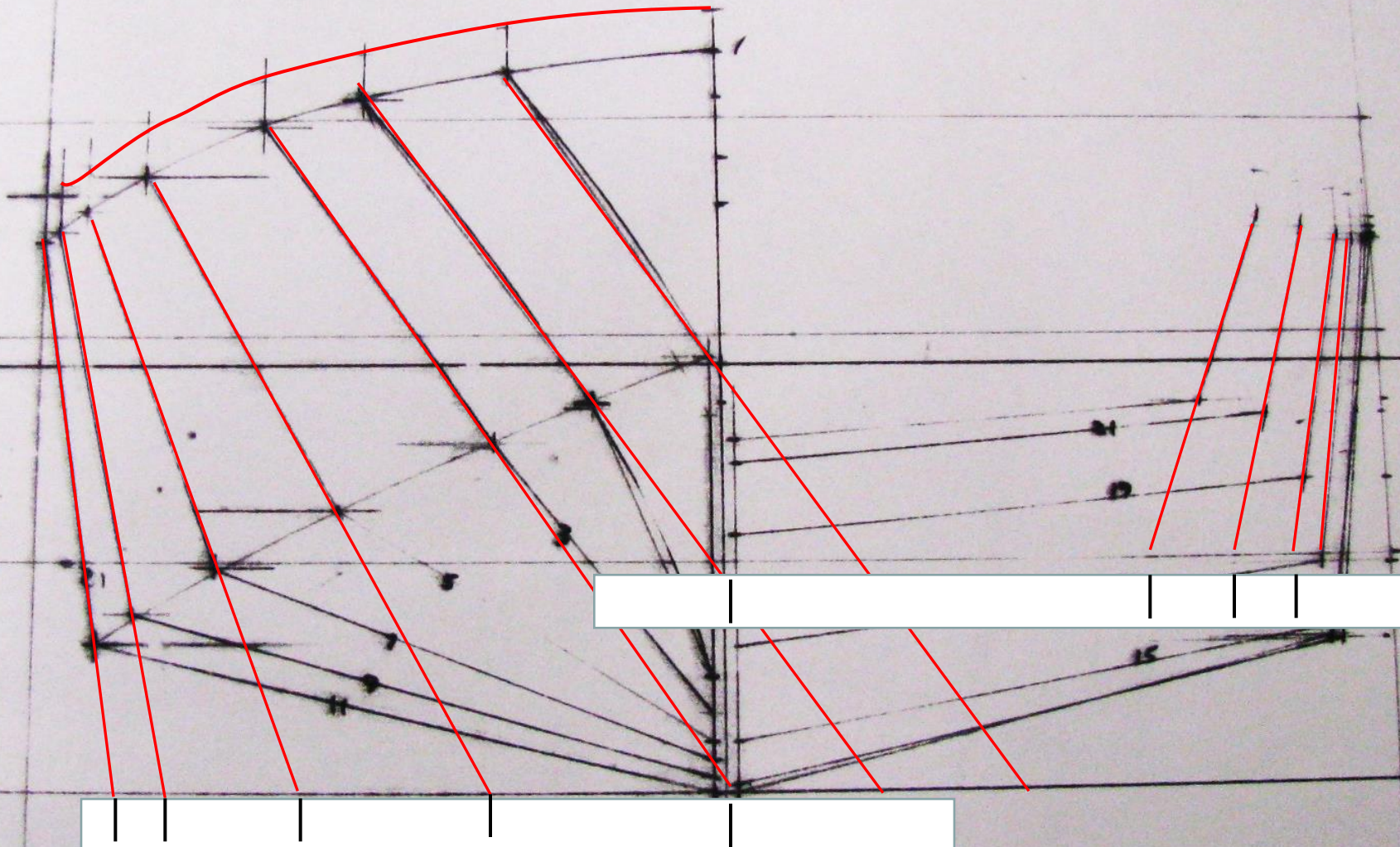


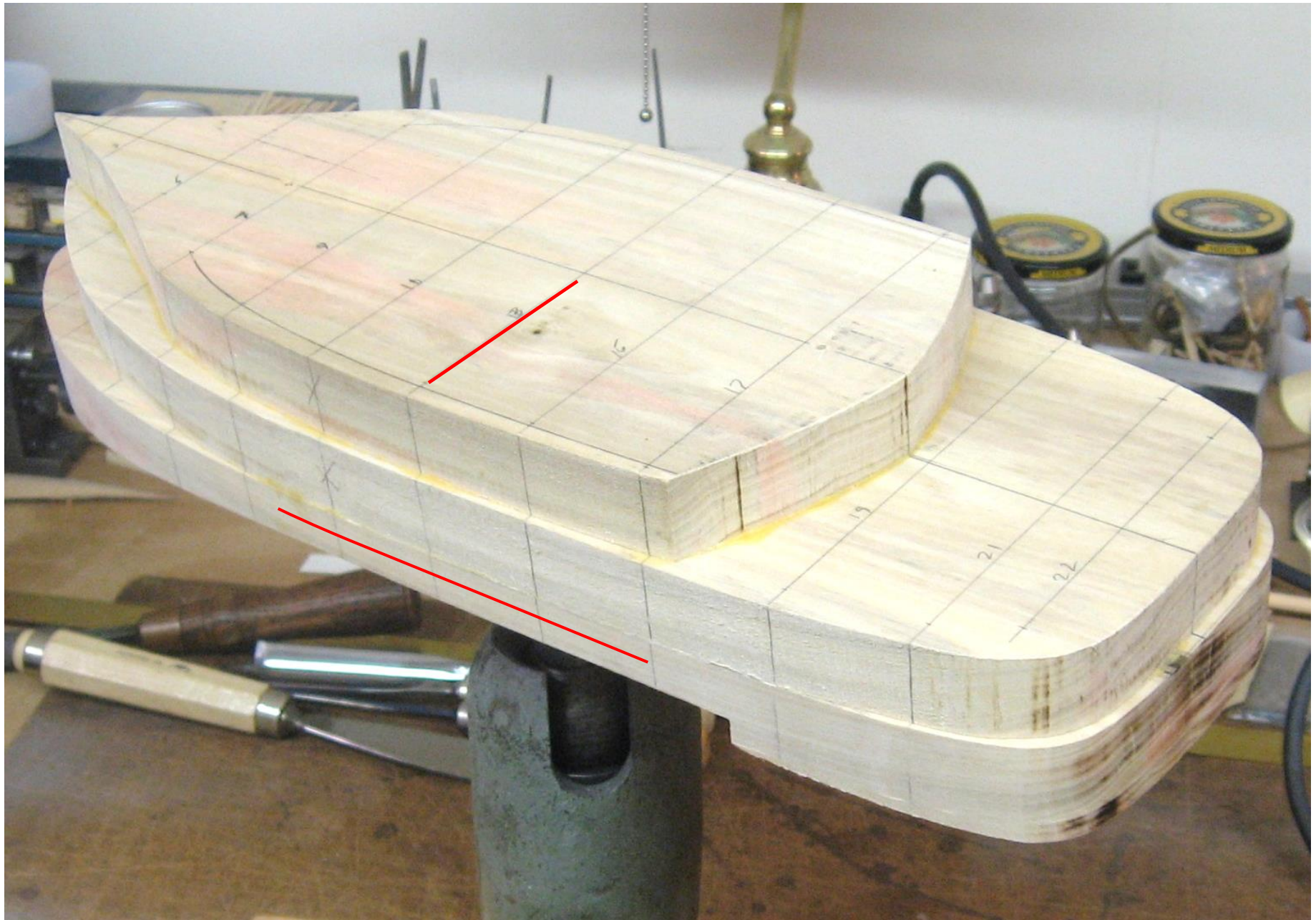
Sheer and Camber Jig template



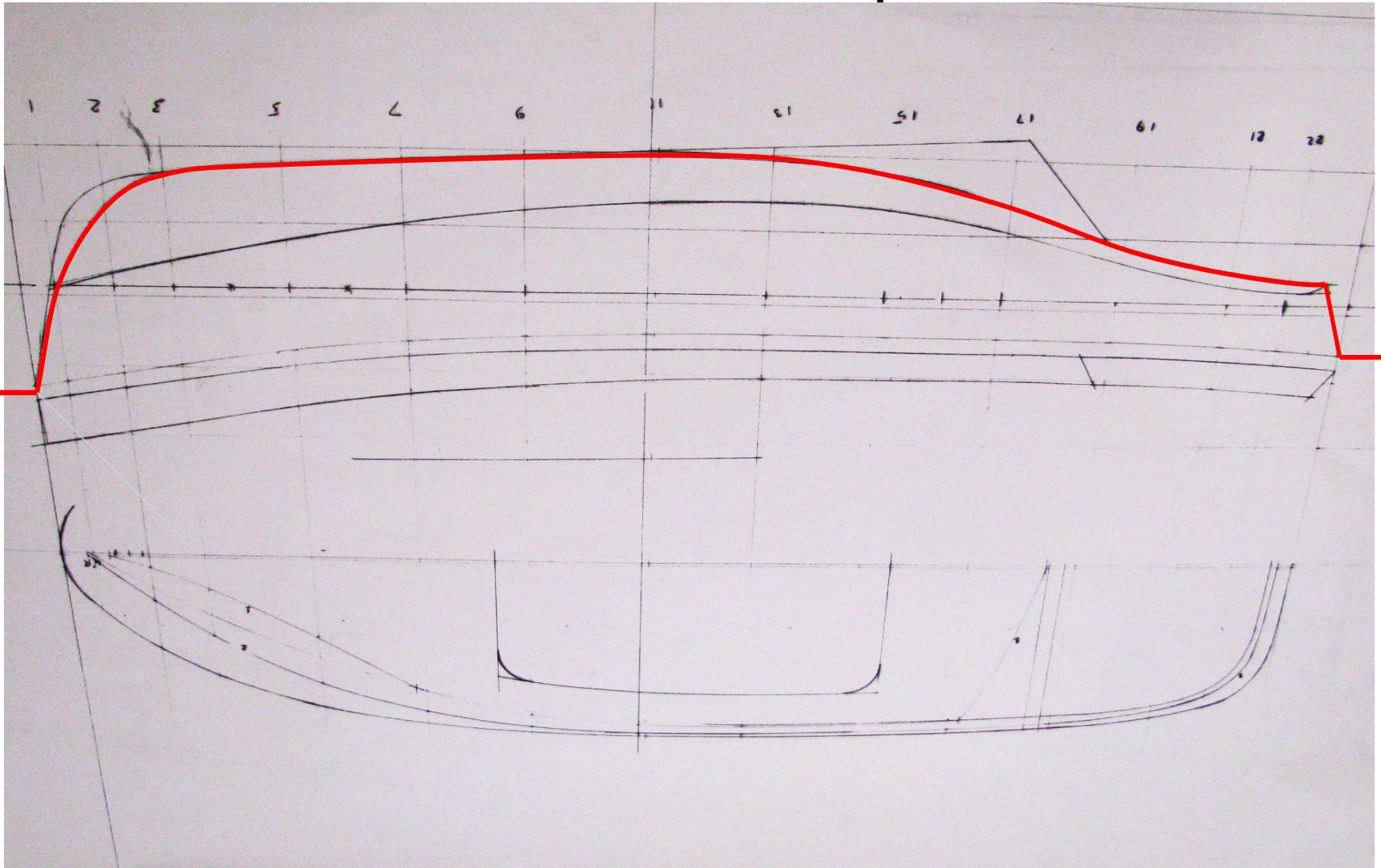


Project to the base line

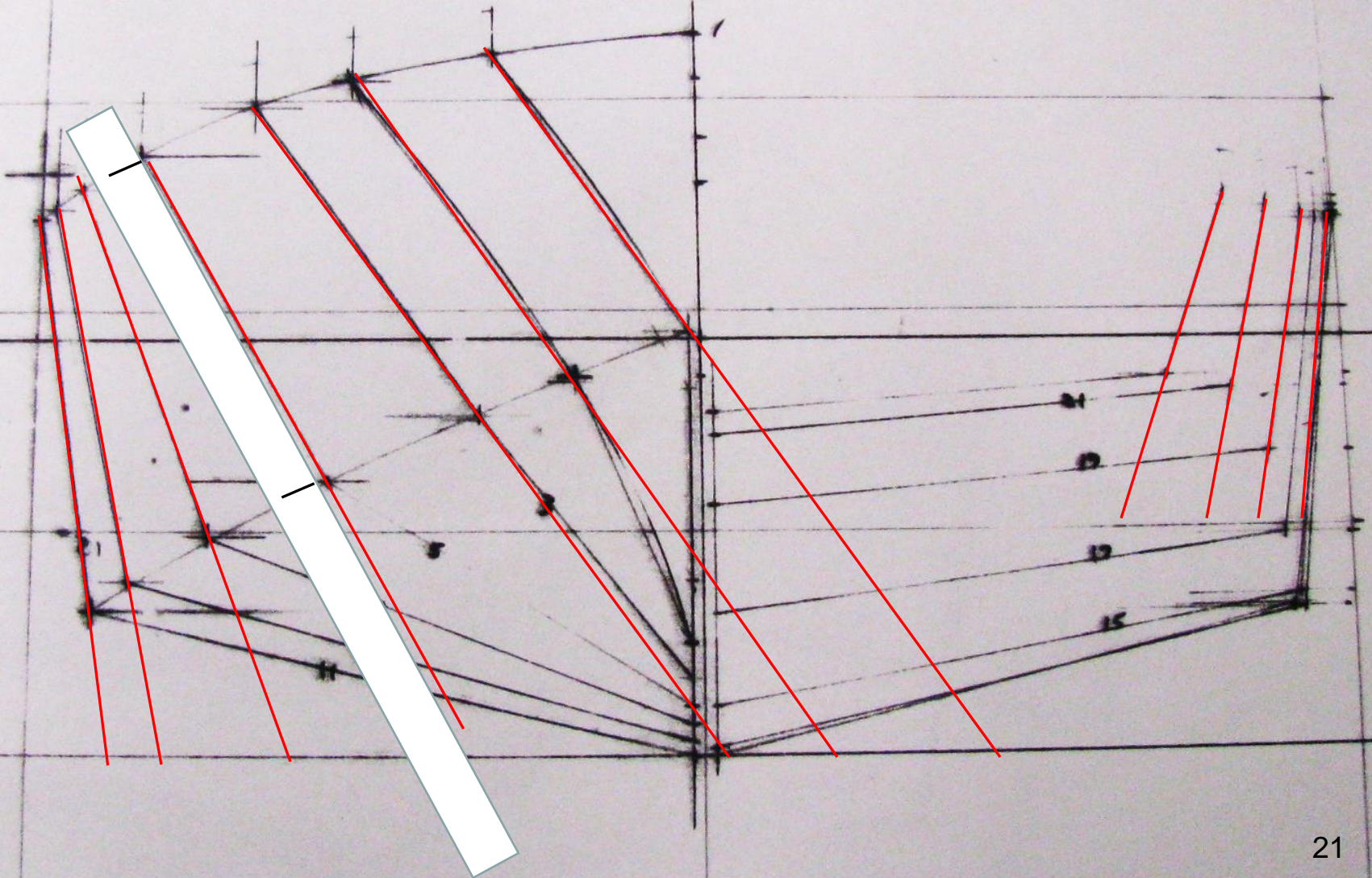




The "Almost" template



Project to the base line







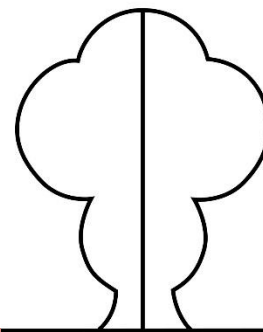




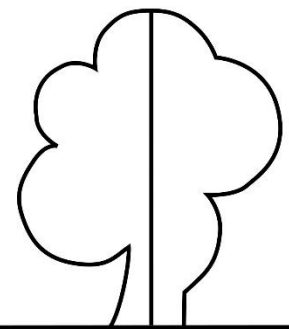
Check for fair



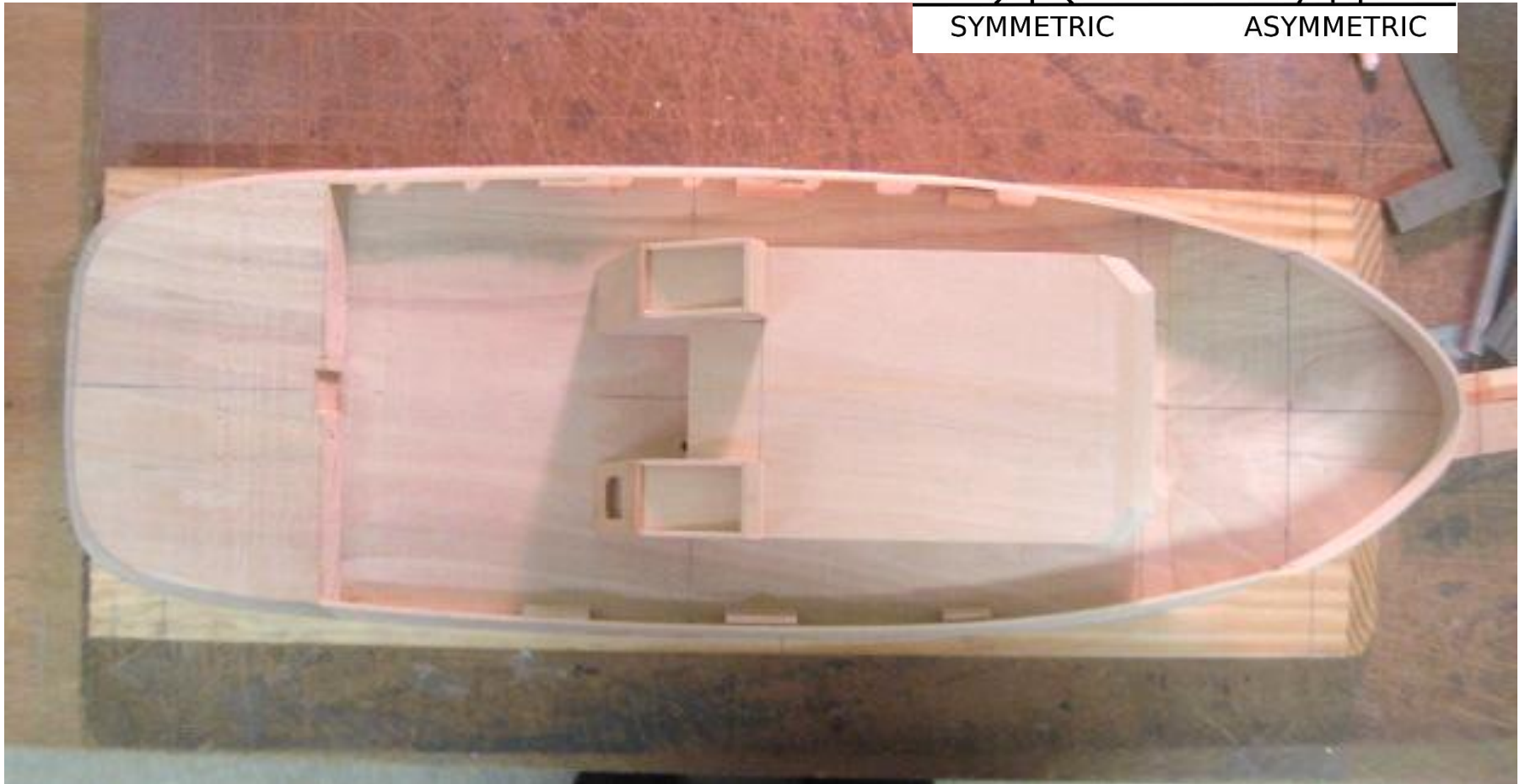
Check for Symmetry



SYMMETRIC

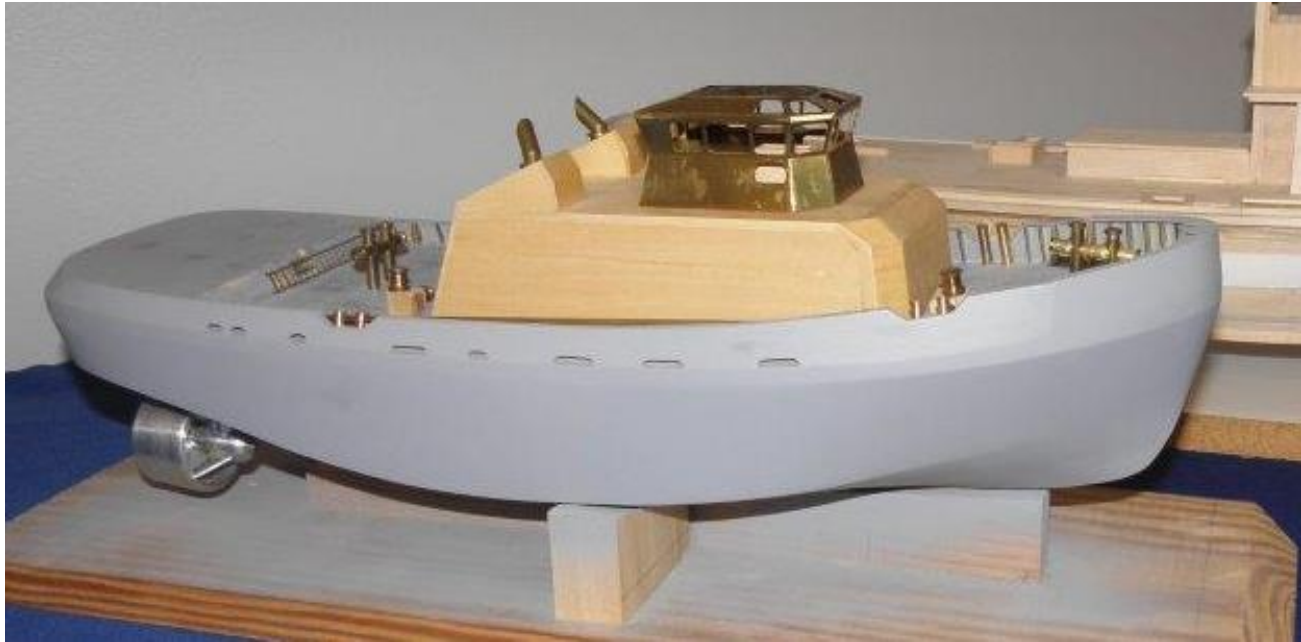


ASYMMETRIC









Again...



***It's not patience,
it's perseverance***