

Building “Bread and Butter” hulls – My Way



By: John Cheevers

~~04/05/2016~~

11/12/2022





JOHN F. CHEEVERS

MASTER SHIPBUILDER

46 YEARS OF SERVICE



One bite at a time



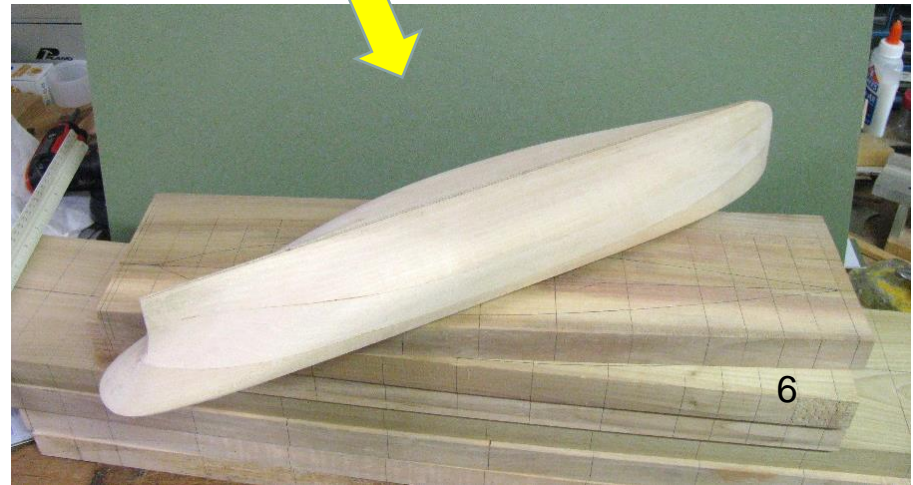


You start with a hunk of wood

Add some
Sweat



And remove
everything that
is not the hull





Once more
with flair?

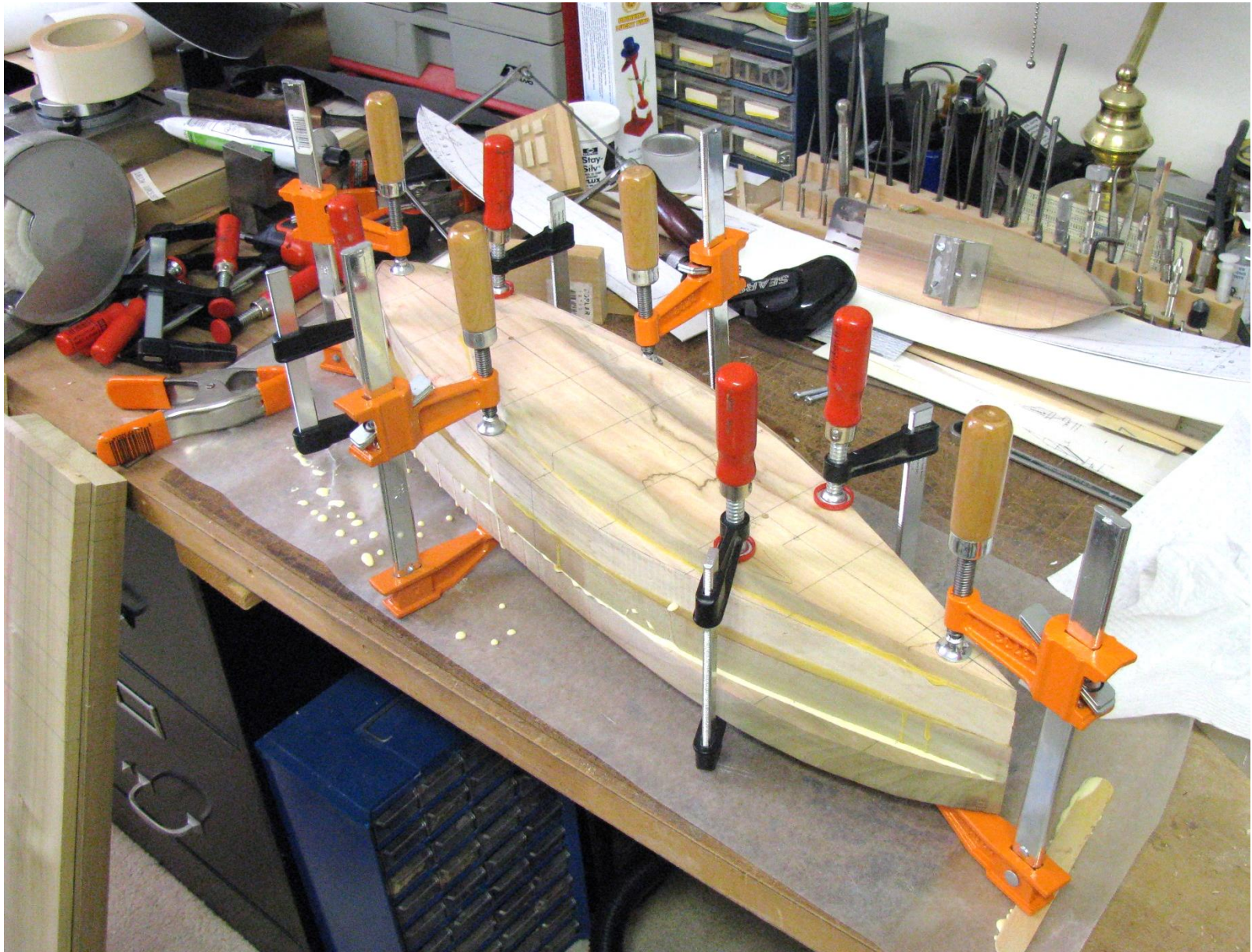
OK, let's go a little slower: you take
some Bread...



Add some butter...



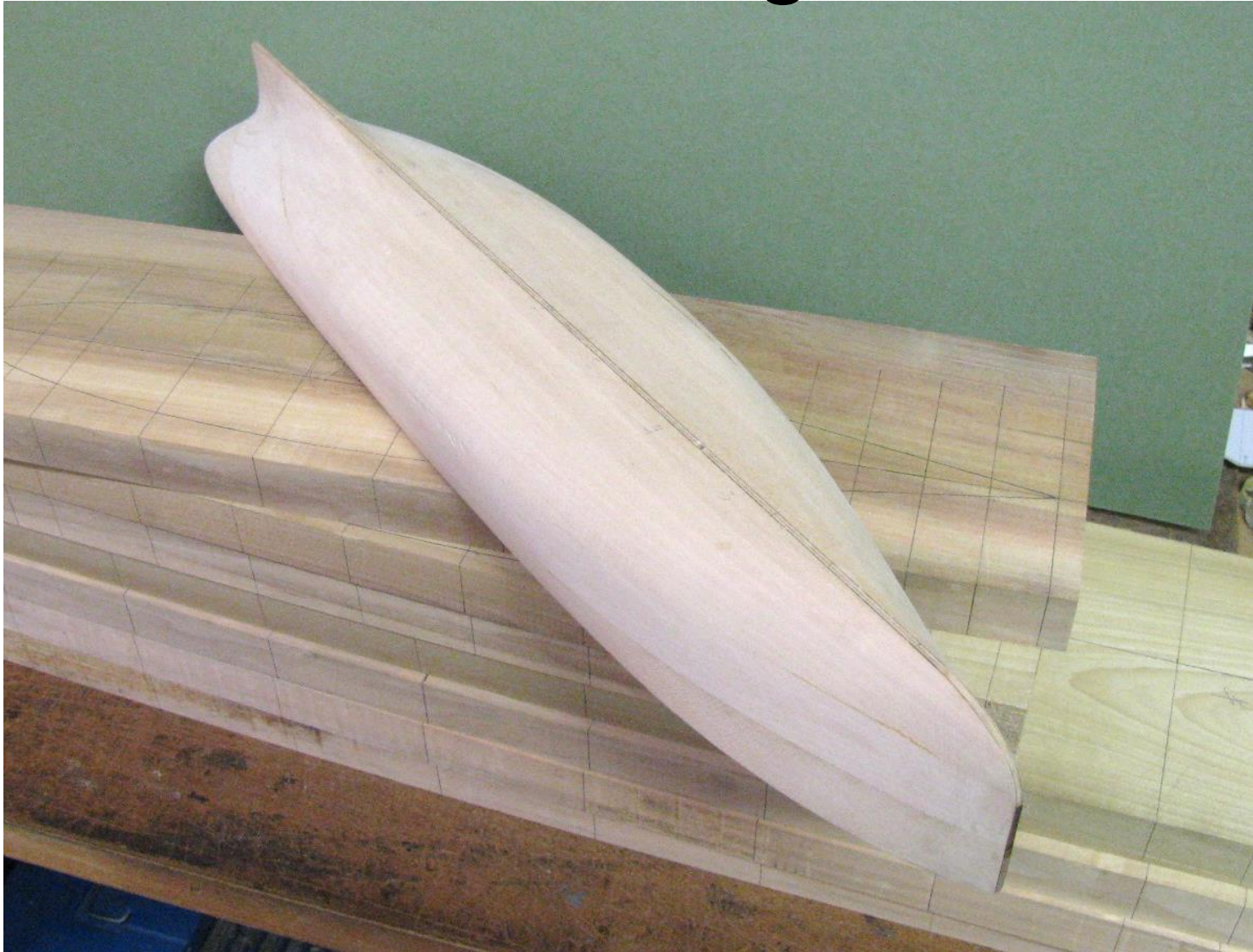
Jam the slices together...



Gnaw on it a bit...



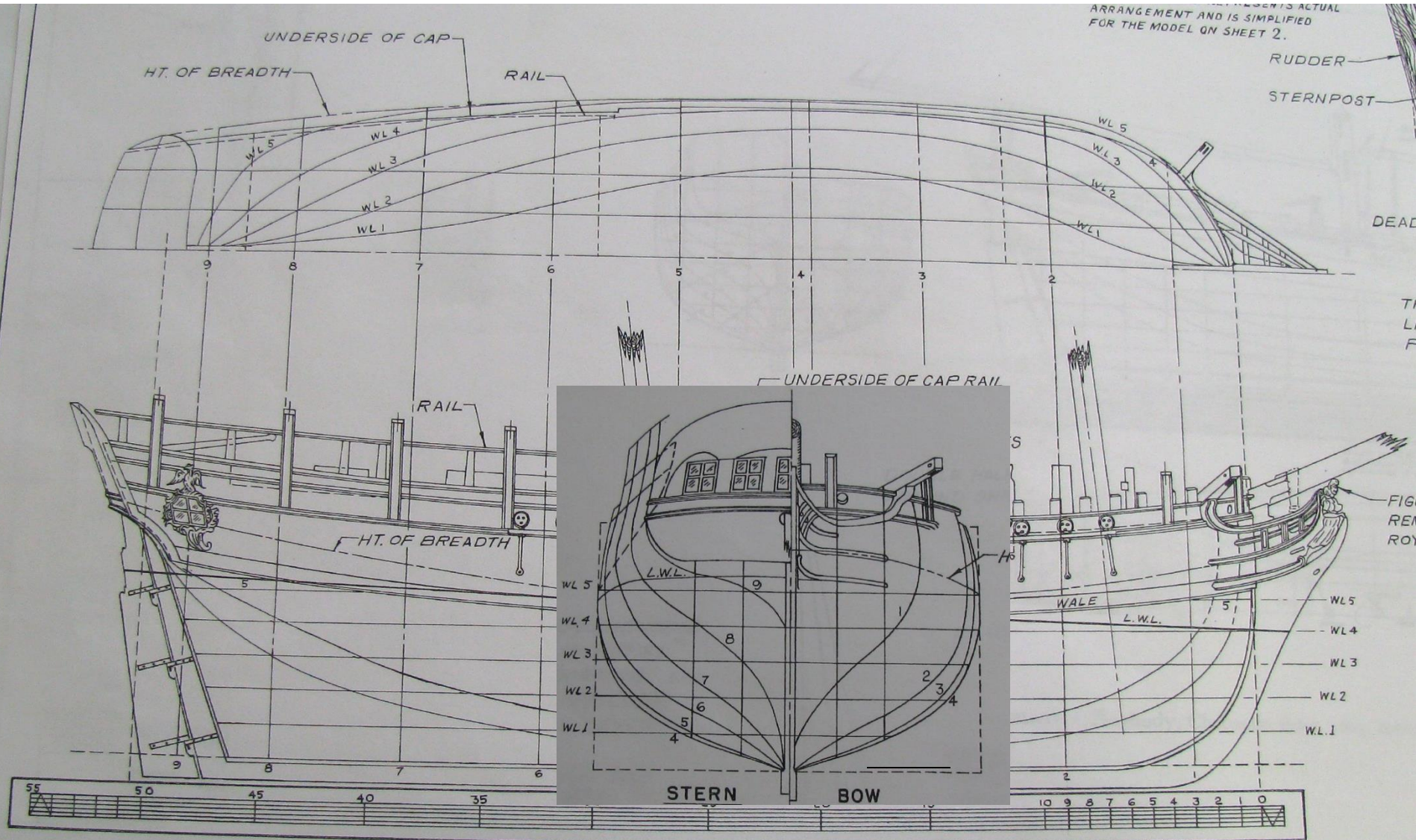
And out pops a hull...
Fair enough?





Now with
gusto...

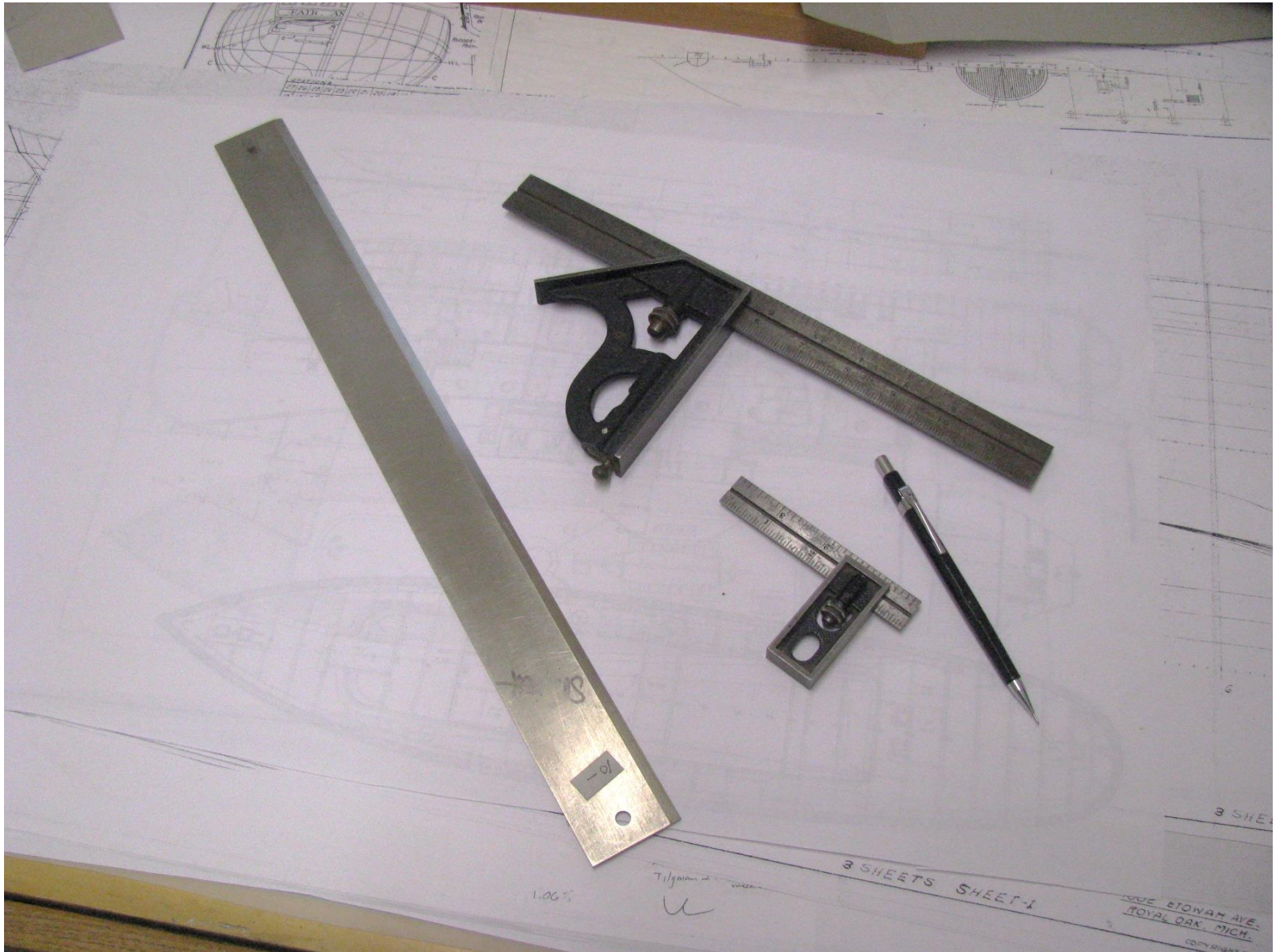
A typical lines plan



~ LINES AS TAKEN OFF AT THE DEPTFORD YARD-JUNE 1768 ~

(LINES SHOWN TO INSIDE OF PLANK)

With a couple of layout tools



And a few hand tools...



And a few hand tools...



And a few hand tools...

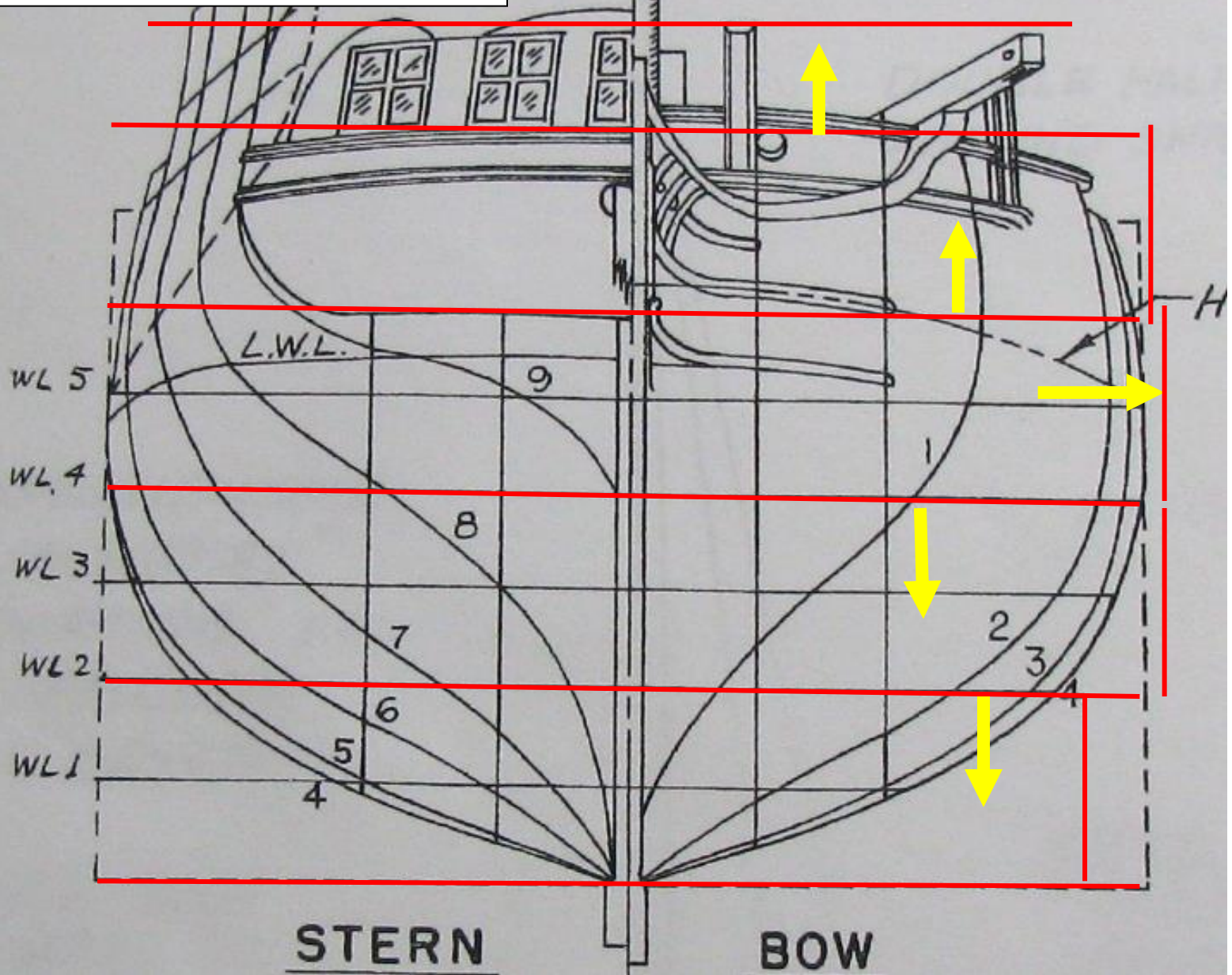


Work position holder



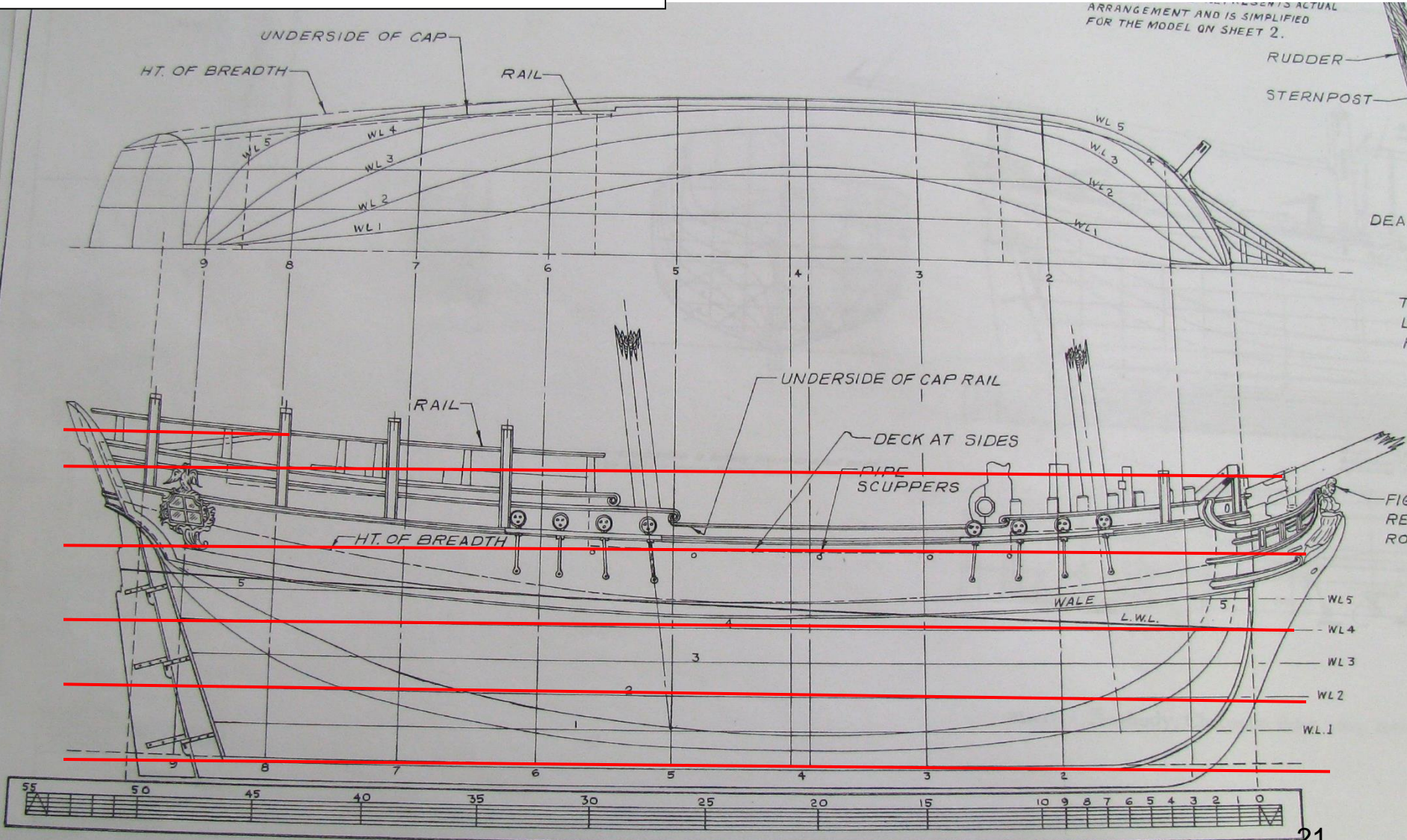
Build your Sandwich:

Bread thicknesses and widths



Build your Sandwich:

- Define your lifts (thickness)
- Rough cut lumber (length/width)



~ LINES AS TAKEN OFF AT THE DEPTFORD YARD-JUNE 1768 ~

(LINES SHOWN TO INSIDE OF PLANK)

Templates!

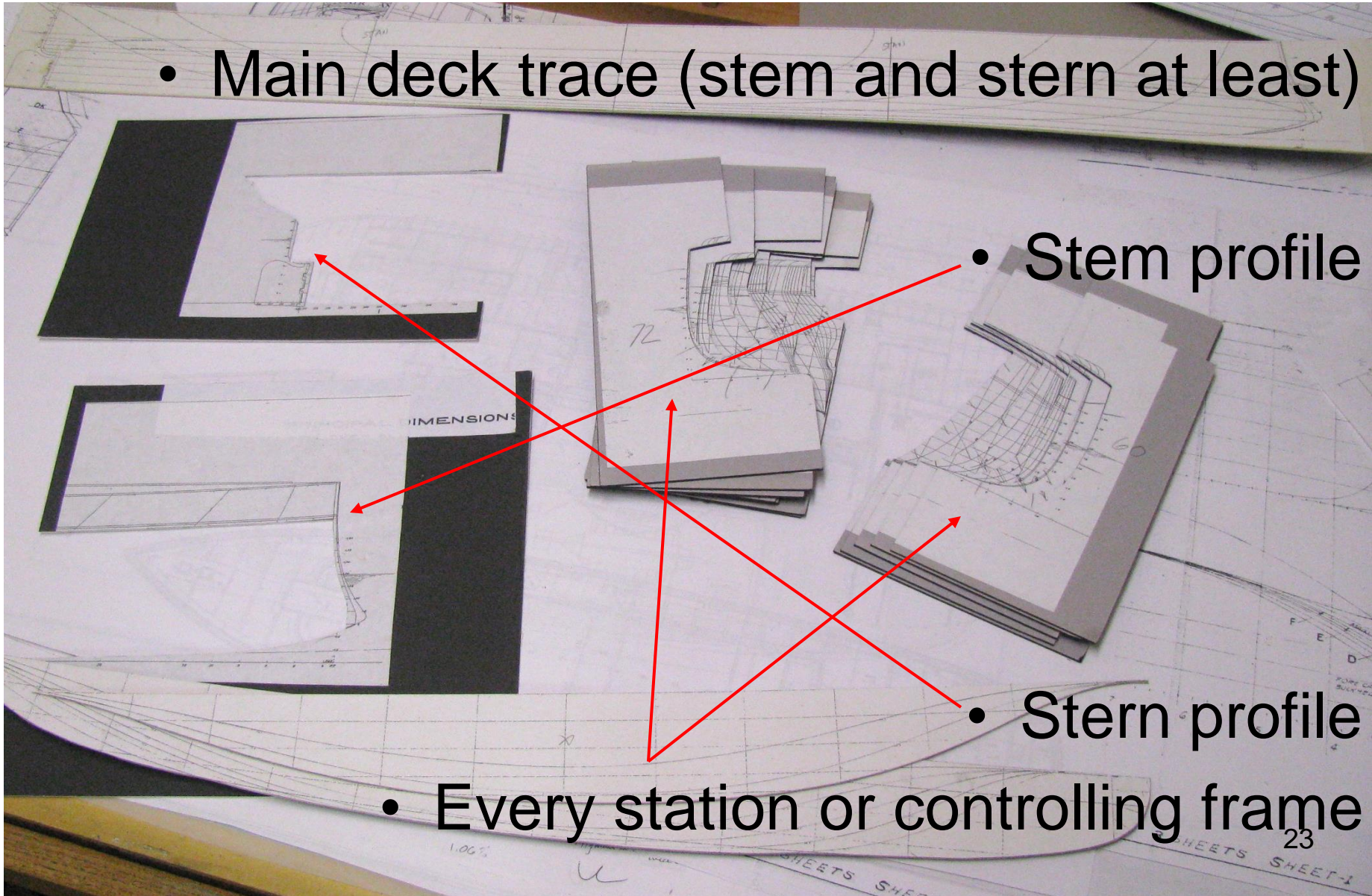
Templates!!

Templates!!!



Templates define boundaries

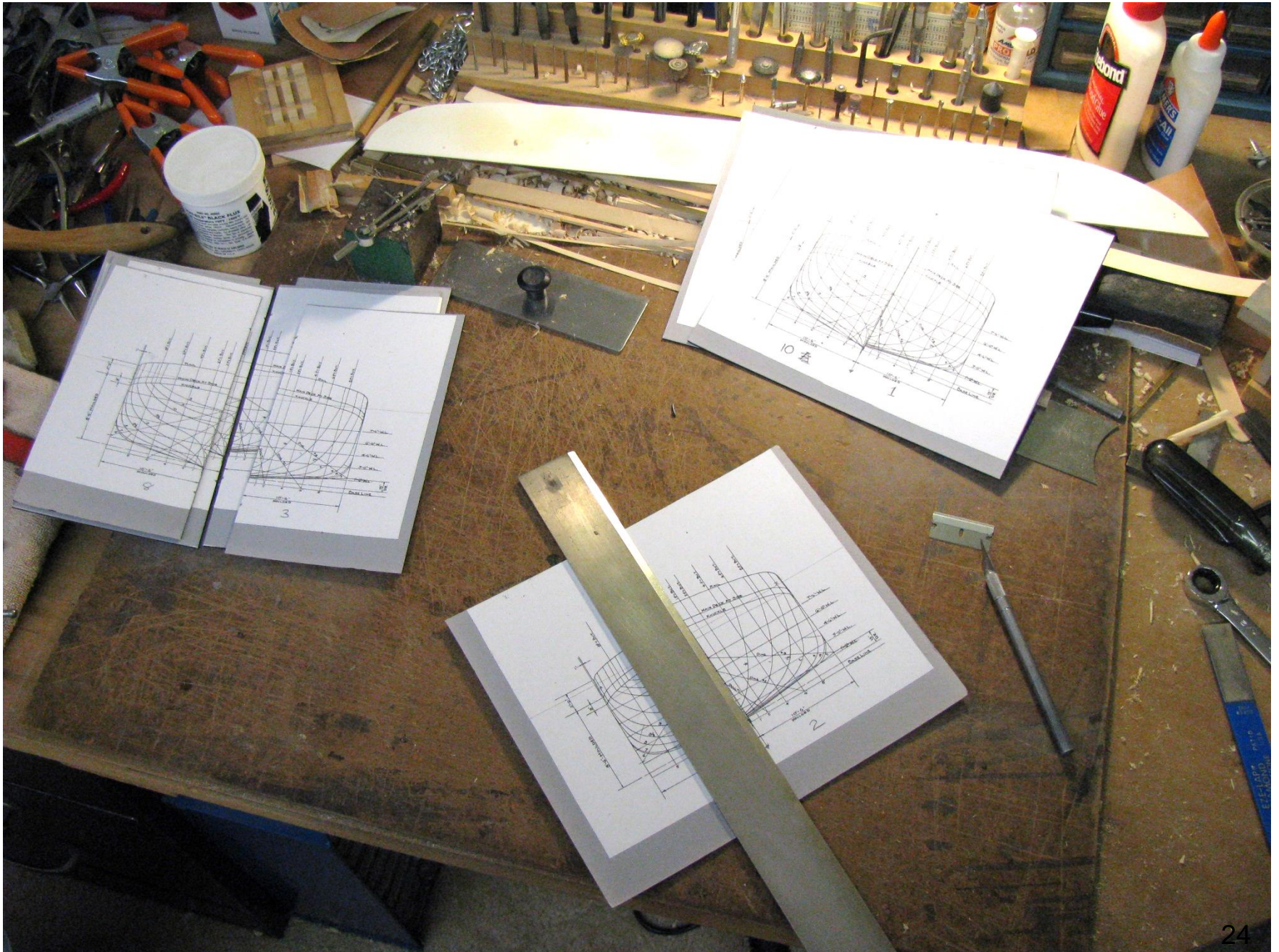
- Main deck trace (stem and stern at least)



- Stem profile

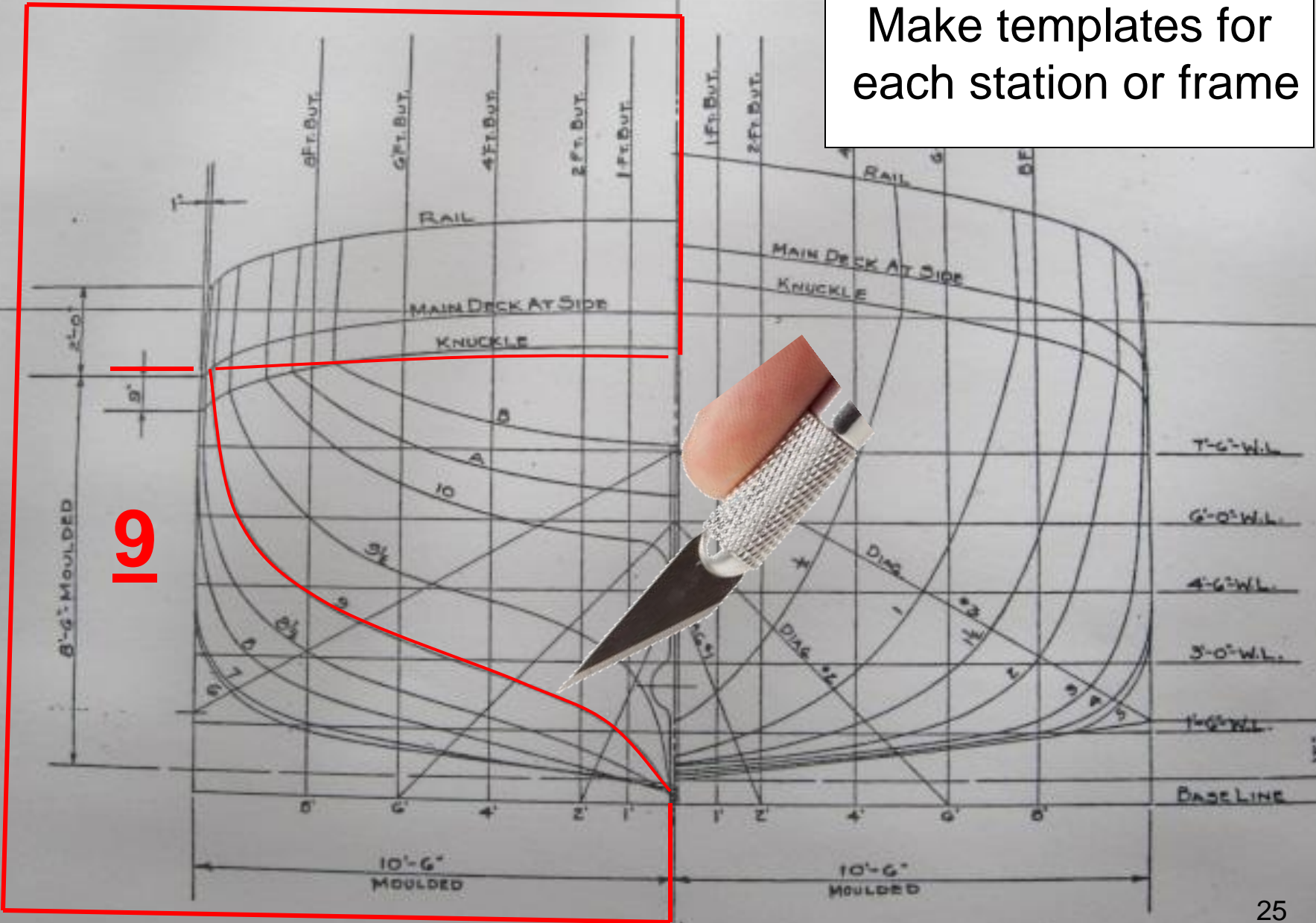
- Stern profile

- Every station or controlling frame



Make templates for each station or frame

19



A bit about wood

- What kind

- Bass
- Poplar
- Sugar Pine
- Other (Non wood?)

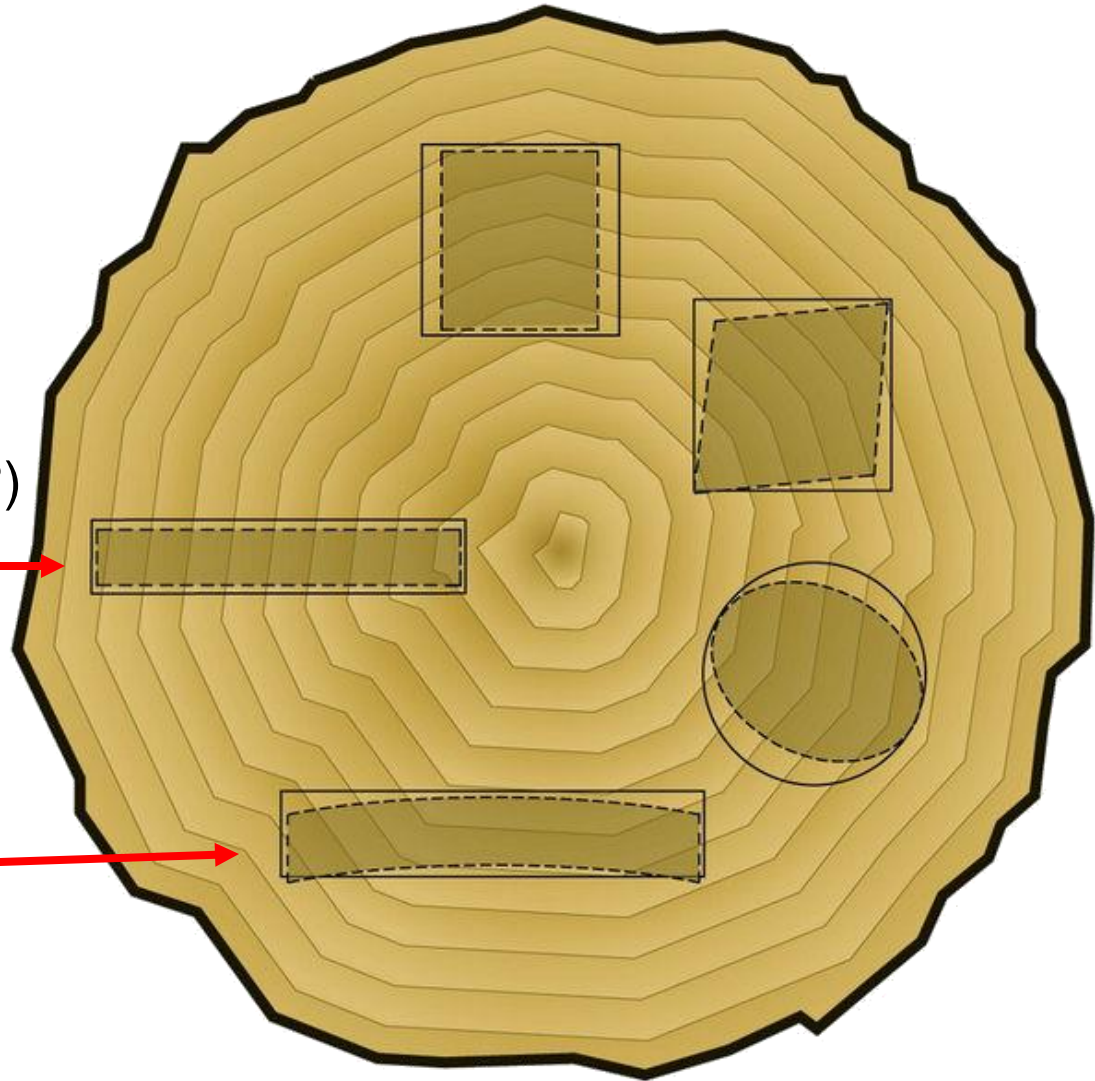
- Quarter sawn



- Flat sawn



- Wood will shrink and warp as it dries



—— Fresh Cut
----- After Drying

Slices - or Lifts

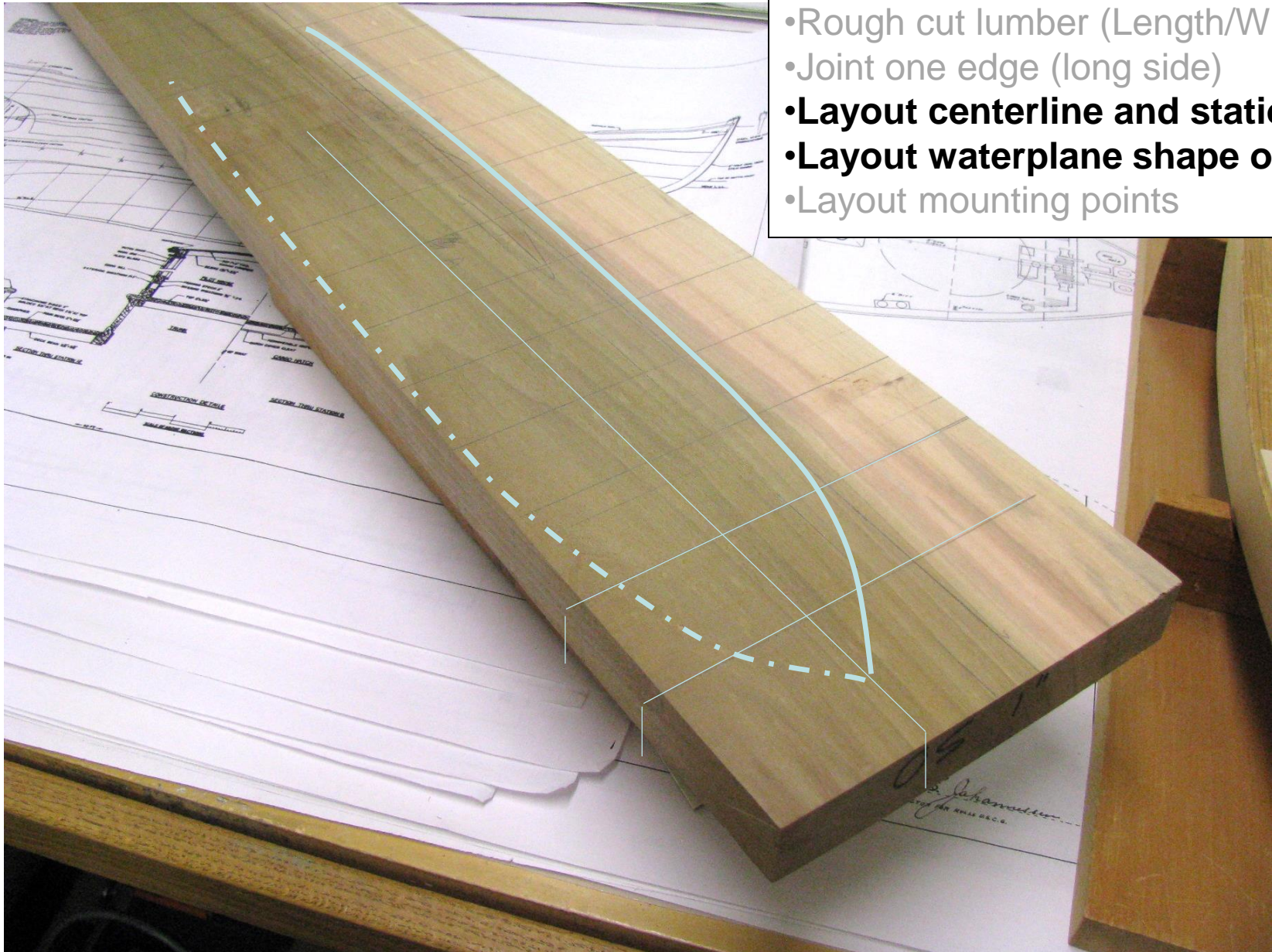
Build your Sandwich:

- Rough cut lumber (length/width)
- Join one edge (long side)



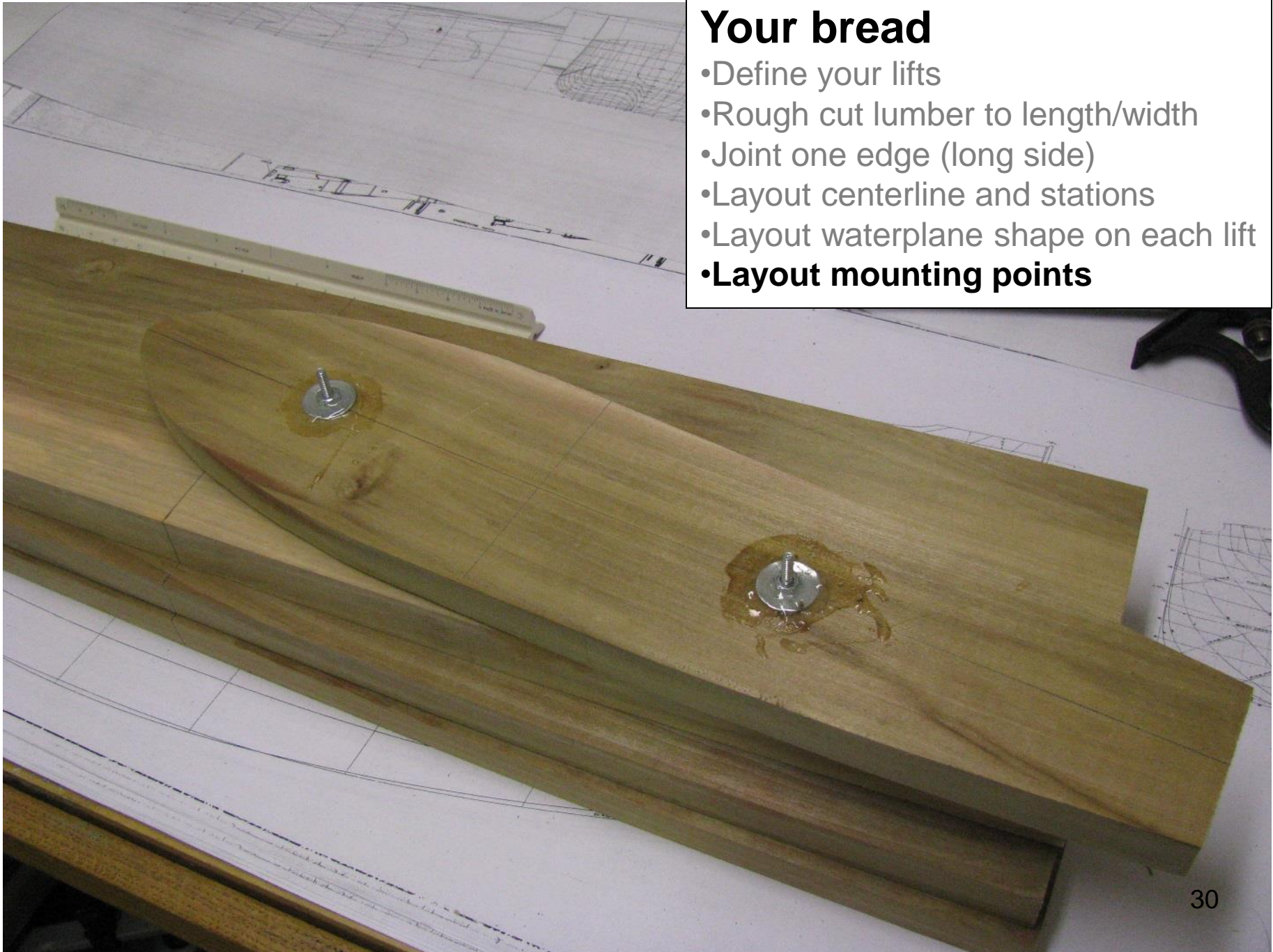
Your Bread

- Define your lifts (Thickness)
- Rough cut lumber (Length/Width)
- Joint one edge (long side)
- **Layout centerline and stations**
- **Layout waterplane shape on each lift**
- Layout mounting points



Your bread

- Define your lifts
- Rough cut lumber to length/width
- Joint one edge (long side)
- Layout centerline and stations
- Layout waterplane shape on each lift
- **Layout mounting points**



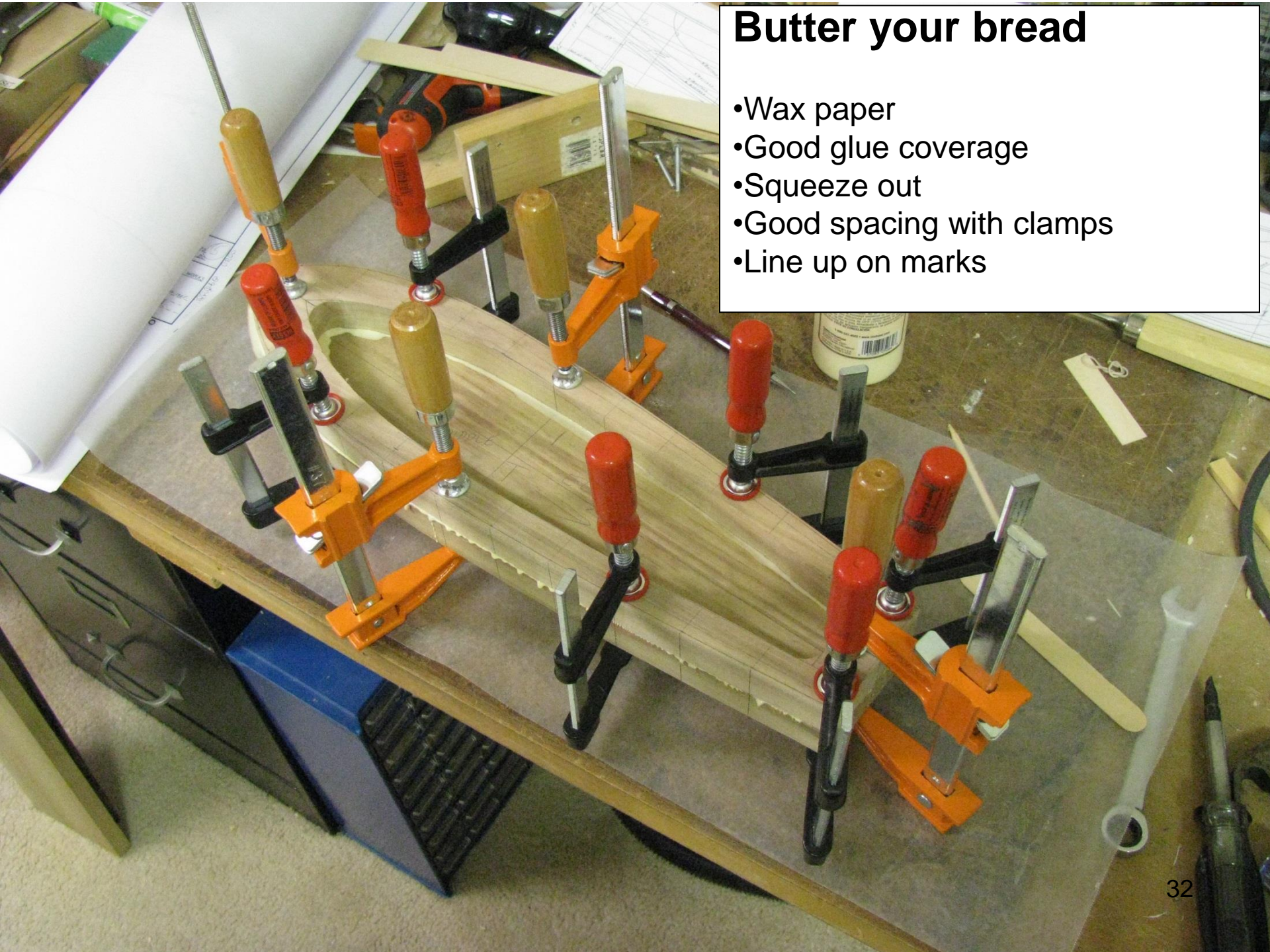
Cut off the crust

- Remove the waste in the lifts
- Ready to glue



Butter your bread

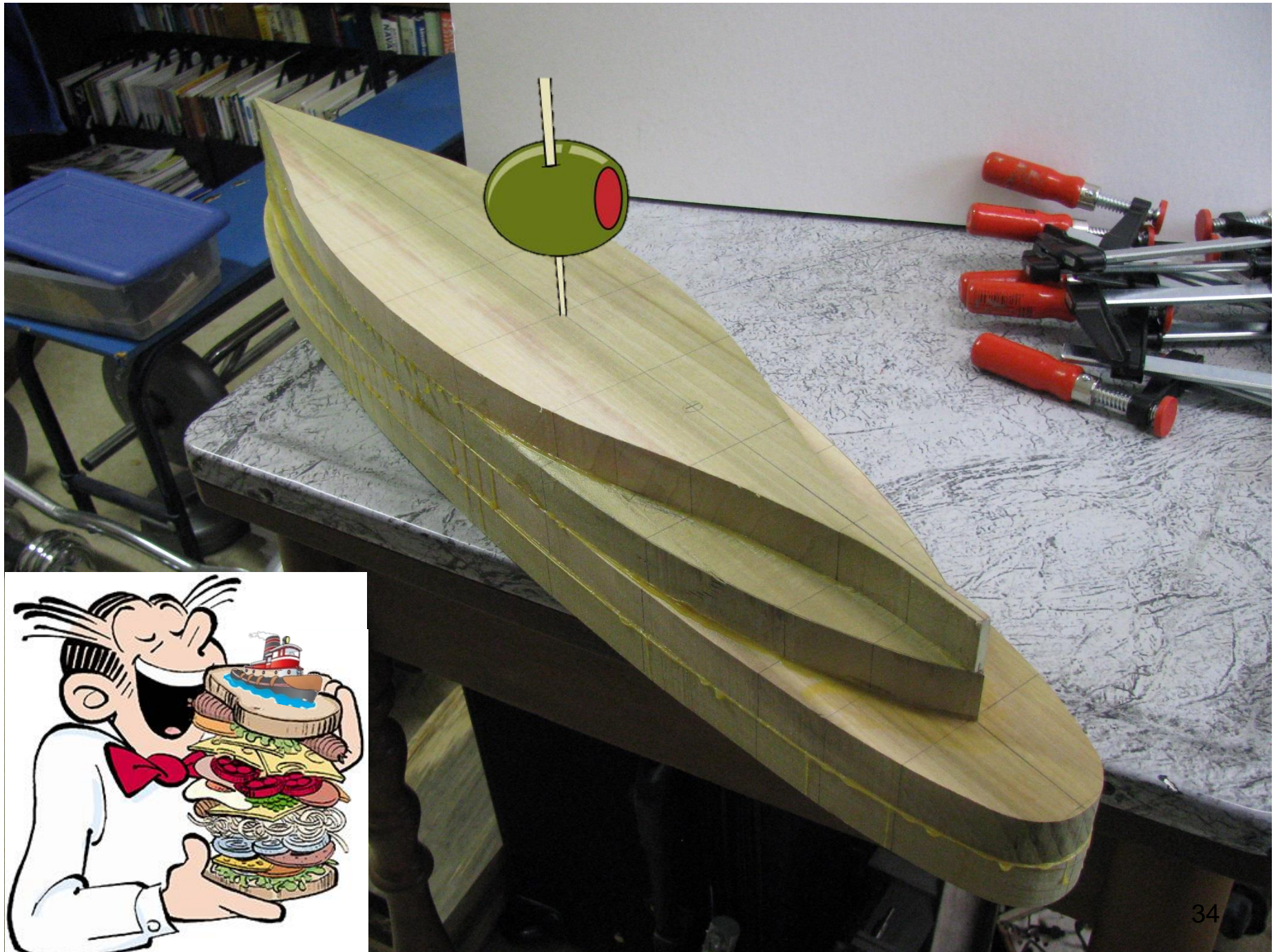
- Wax paper
- Good glue coverage
- Squeeze out
- Good spacing with clamps
- Line up on marks



Butter your bread

- Last gluing closes the box

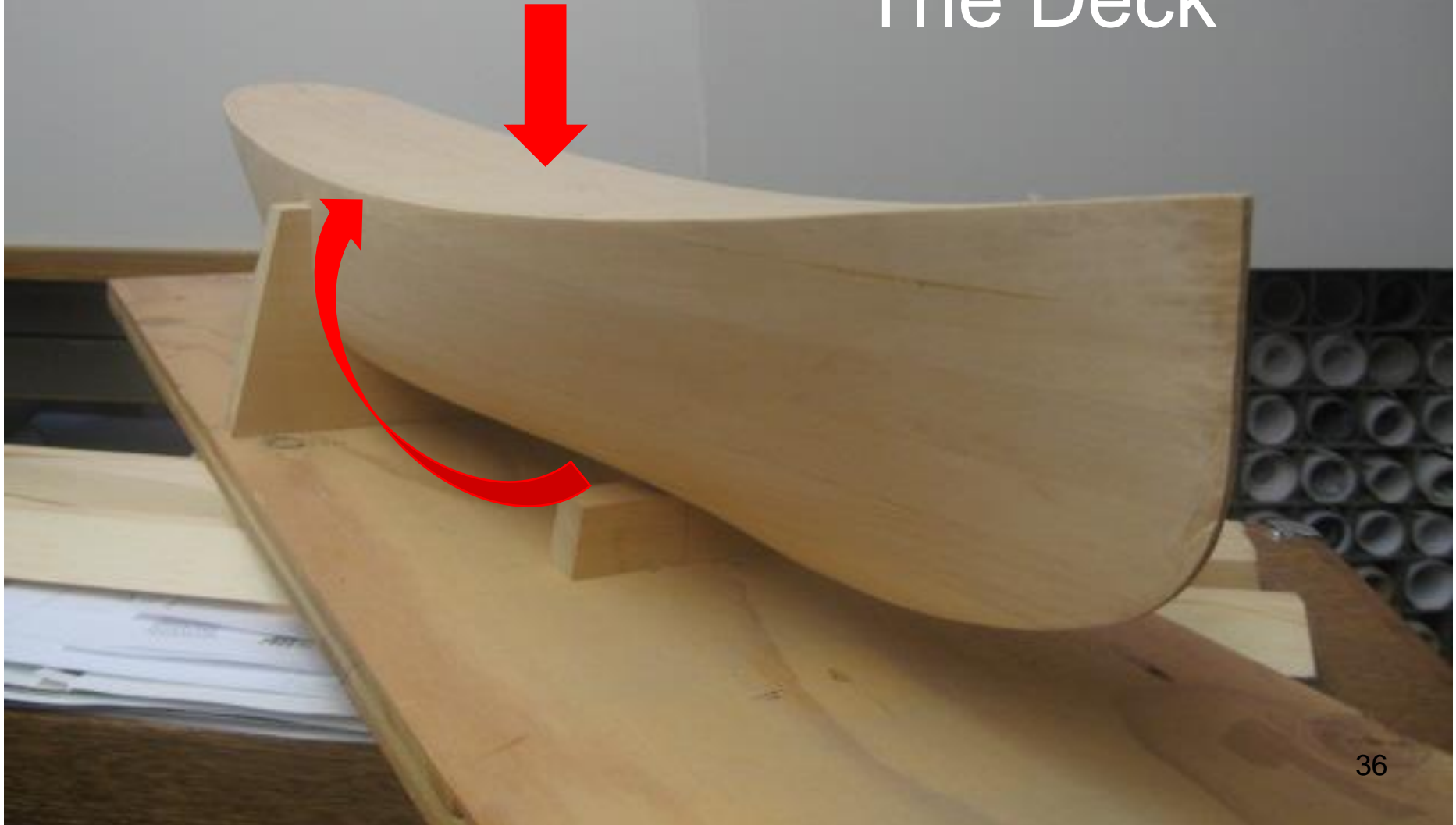






Let's gnaw
on that
sandwich!

First boundary: The Deck

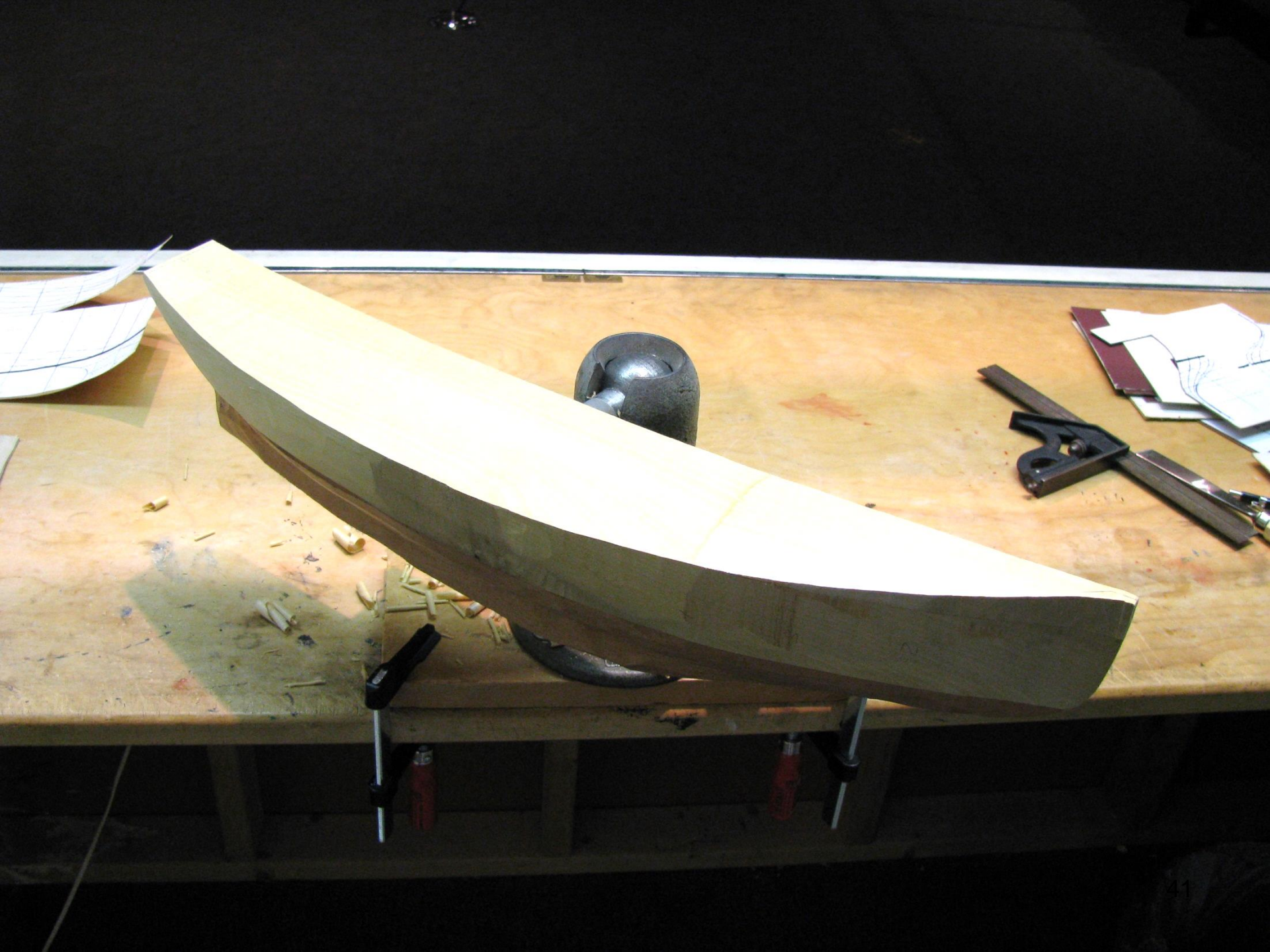






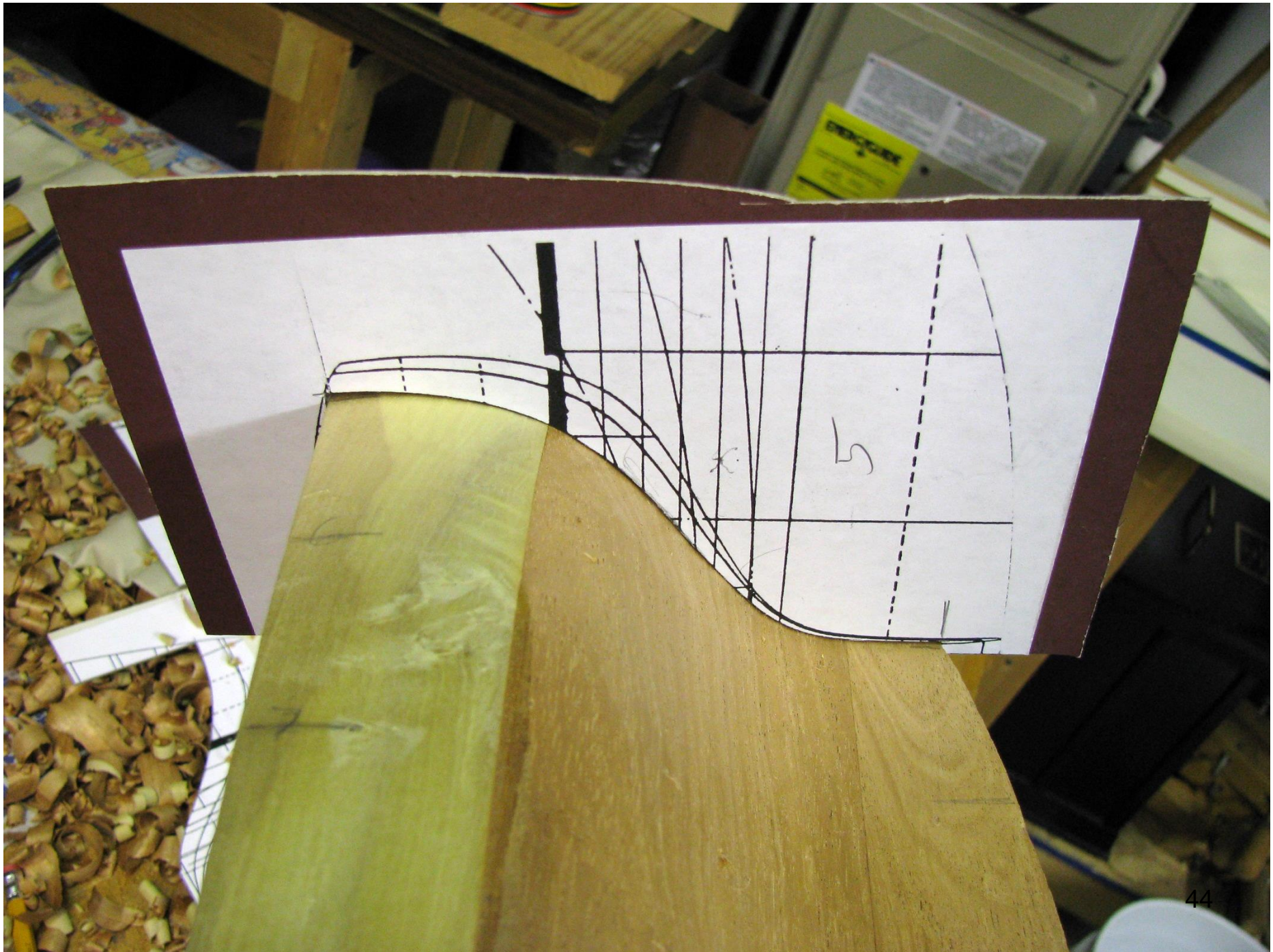


Time to
carve !





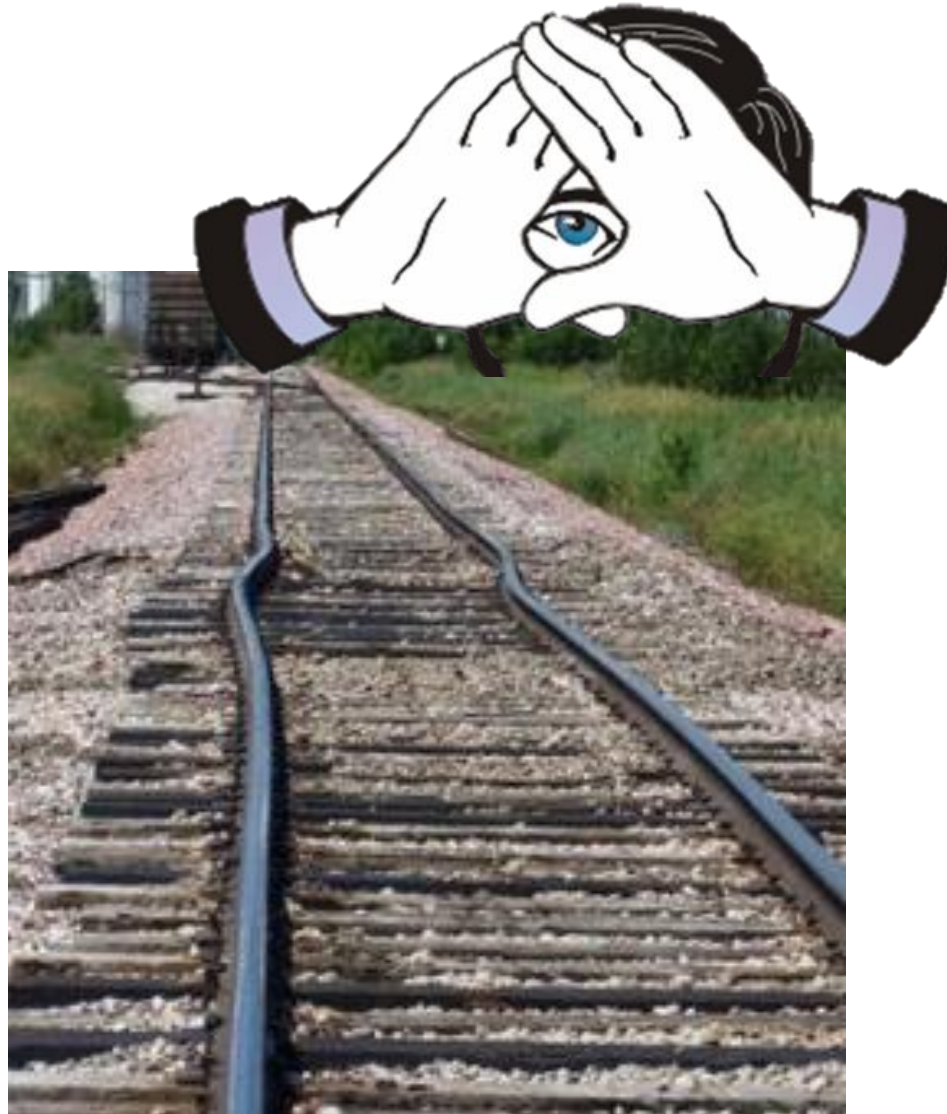




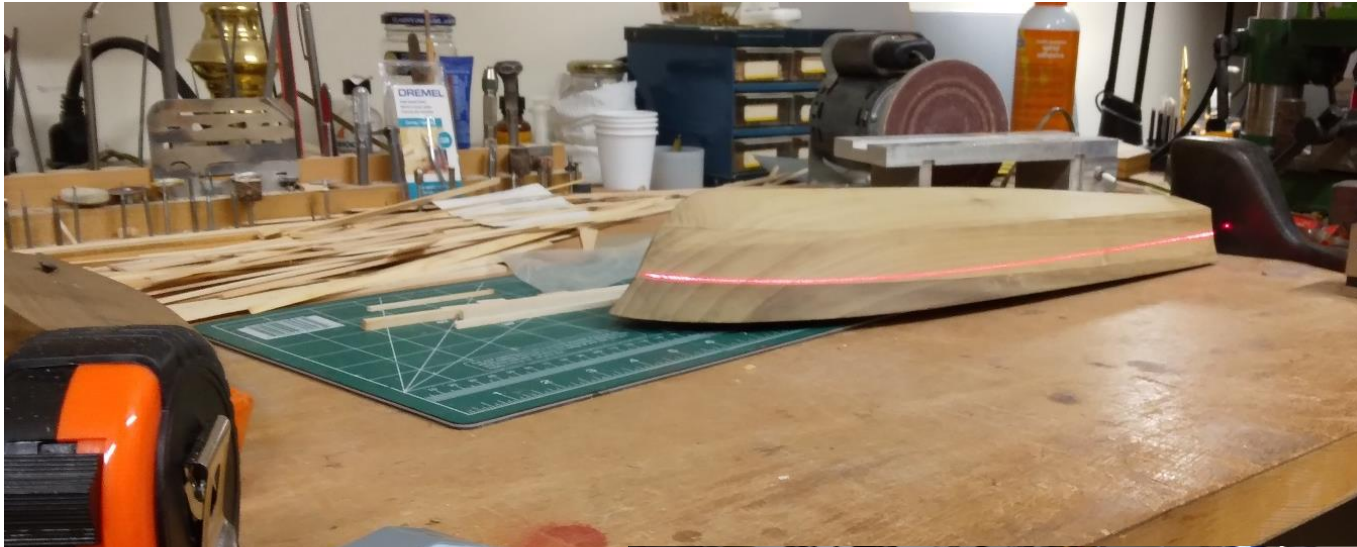




Check for fair



Check for fair





***It's not patience,
it's perseverance***