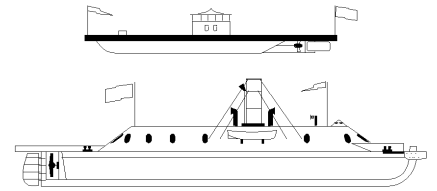


Hampton Roads Ship Model Society

Logbook



No. 254

WWW.HRSMS.ORG

AUGUST, 2007

From The Bridge



Mystery Photo



Heading into fall

With fall just around the corner, we need to take stock of upcoming events and lock them into our schedule. In a few short months we will open our model exhibit at the Poquoson Public Library. Those of you who plan to exhibit models need to get your model data to Alan so he can make up the exhibit cards. Also, anyone willing to conduct a demo on any aspect of the hobby, but preferably related to some aspect of your model, should get with Alan and he will help coordinate your effort.

The annual picnic comes up at the end of September. Once again it will be at the Newport News City Park. Plan to attend and bring something special for us to sample; we will provide the usual burnt offering to everything meat. Bill Dangler is coordinating this event, so check with him for what we need.

At the last meeting the club voted to alter our traditional second Friday of the month meeting schedule in favor of trying out a permanent and large venue at the Mariner's Museum. The plan is to hold meetings not scheduled for Friday evening at a members' home on Saturday, weekend and time to be determined, so we can take advantage of the larger facility they offer. I think we will meet in an upstairs classroom. This may alter our usual after meeting refreshment, but we'll see what works.

It's time once again to hold an auction. Some of us need to divest ourselves of duplicate, surplus, and redundant items that may be of interest or use to others in the club. This event is usually held in December but we can do it earlier if we choose. I personally know of one member who is sitting on a lot of stuff that has to go, and we have what we gleaned from the Frank Mastini model shipyard. The pile is getting very high. I plan to offer a few tools, some with a reserve, and some with HRSMS profit-sharing. Look through your shop and decide what needs to go.

Finally, I leave you with this thought – metal spinning.

That is all,

John

"Never go into strange places on a falling tide without a pilot."

Thomas Gibson Bowles

Mystery Photo #253: If you're thinking "US Navy," you're on the right track. If you're thinking "battleship," you better have another look at the image. This month, only a few, true shell backs responded; Bob Comet, the ole' gunnery officer himself, and Charles (no-guns) Landrum. Where do their responses take us? Before I reveal the answer to that question, let's spend some time studying the image closely.

It was obvious, to me at least, that the image captured either the removal or re-installation of a turret mounted rifle. Judging from the state of the surrounding structure and the large crowd, I guessed that we were seeing the removal of one gun – or both. Since the sailors are in their dark blue uniform this is probably happening in the winter half of the year. (I need someone of experience to tell me when the regulations require the darker uniform.) If you look closely you can see the evidence of the bolted construction of the turret. First the top is unbolted and removed, then the face.

Bob Comet responded first and indicates that "The photo is of a US vessel of the "new navy" era. The guns are U.S. design, and the sailors' uniform with piping on the collar identifies it as U.S." He indicates that "the guns are twin 8" breech loaders, mounted in what appears to be an open bar-bette mount." I agree, and if you use your fingers as crude calipers and measure the muzzle end of either barrel you will see that it is close in size with almost any sailor's gourd in the image. The open mount puzzled Bob for a time until "[he] happened to run across a photo of a pair of heavy cannon that were mounted in an open barbette before the turret house was installed!! This led me to the conclusion that this is the case with our mystery photo--the turret house had not been installed." Finally, making his guess he had this to say: "They are old cannon, probably of the 1880's period, so I am making a guess that it is the *Rochester* (designated as an Old First Class Cruiser in my Jane's WW I), ex *Saratoga*, ex *New York* which was built in 1891. So shoot me for guessing!"

Charles Landrum arrived at his conclusion with a little more ease. "The picture is of the foc'sle of a *Pennsylvania* class armored cruiser just before US involvement in WWI based on the paint scheme, the uniforms and the pre-war style of bridge windows." Good eye, Charles! "The gypsy head winch outboard the turret, the smaller diameter barrels, the chain locker forward of the turret and the window configuration are the features I used to ID the ship class. My guess is

(Continued on page 2)

(Continued from page 1)



Mystery Photo

West Virginia or *Maryland* since both were built in NNSB&DD Co. Narrowing down further, *Maryland* had a roller path problem with the forward turret that was never resolved. This could be *Maryland* during a repair attempt.”

I, too, felt that the image captures a US Navy armored cruiser. I also felt that we were looking at the forward turret because of the way the deck hatches are hinged. And, if you look real close at the area just forward of the left most gun, you can see some anchor chain. Just in the last few years we ran images of the foredeck turret on one of these ships. Prior to that, many years ago, we ran an image of New York tied to a Boston pier with a pre-dreadnaught. The accompanying image shows the foredeck of *Maryland*. Sure does match our mystery image.

This mystery could have been solved by consulting your back issues of *Logbook*. I seem to remember New York's turrets being round in shape whereas these are oval. I'll leave the actual identification to the editor. Bob, we don't shoot people for guessing, we shoot them for guessing wrong.

John Cheevers

THE ANSWER

Mystery Photo 253 was provided by Bill Clarke. The postcard has no name or identification. The Mystery Photo remains a mystery.

Sources for Information about Ships' Plans

I have heard several members of the Society say they are confused about the jargon that some of us use concerning ships' plans in particular and things nautical in general. Those of us who have been used to the terminology tend to forget that some do not understand what we are talking about.

For those who want explanations concerning ships plans, body lines, sheer plans, body plans, tables of offsets, etc., I have researched my library for sources that explain these things far better than I am able to do. All of the sources are available in The Mariners' Museum Library. For those who have difficulty in getting to the library, I can make copies from my books if requested.

The sources are listed in ascending order of detail, with a few words of description:

Historic Ship Models by Wolfram Zu Monfeld, pp 68 – 69
The pages cited contain a very brief illustrated explanation of the various lines and views associated with ships' plans. The book is an excellent source of nomenclature definitions. It

covers in some detail the various components of ship models, showing differences between ships of the 16th through 20th century practices. There is an index that translates ship nomenclature between English, German, French, Spanish and Italian. For the ship modeling beginner who wants to have a single volume, inexpensive and packed with explanations, this is an excellent book to own.

History of American Sailing Ships by Howard I. Chapelle, pp 19 -22

The cited pages contain a little more in-depth explanation of ships' plans.

Modeling the Brig of War "IRENE" by E. W. Petrejus, pp26-30

The cited pages are a general explanation of ships' plans as they relate to a specific ship.

Watercraft Modeler's Handbook by Benj. Lankford jr., pp1-5 to1-6

These pages give an excellent explanation of ships' plans as they apply to smaller watercraft, differentiate between hard chine and curved hull plans, and introduce tables of offsets. The book in its entirety has a wealth of practical information regarding the modeling of small craft by a recognized expert in the field.

Boat Building by Howard I. Chapelle, Chapter I Plans and Chapter II Lofting

Although geared to the building of 1:1 small craft, the chapters cited contain detailed explanation of the development of plans, tables of offsets, and lofting of drawings for construction, they apply to any ship's plans.

I hope this will be useful to those of our membership who would like to have additional explanation that they can read on their own for their personal development in ship modeling knowledge.

Bob Comet

Thanks

The members would like to thank John Wyld and his wife for hosting the July meeting.

NAUTICAL TERM

No Man's Land The area in the waist of a ship that is vulnerable to shipping seas in rough weather and is often cluttered with gear and stores. The name speaks for its self.

Submitted By: Tim Wood

MINUTES



HRSMS Monthly Meeting
July 13, 2007
Host, John Wyld

The meeting was called to order by the Skipper, John Cheevers at 2013 hours. There were no guests present. The Skipper called for corrections to the minutes. The ever-observant Tony Clayton noted that Bob Comet must have enjoyed his visit to the "Navel Museum" in Vienna. Actually, Bob went to the Naval Museum. No other correction of substance was noted. The Purser's was give by Eric Harfst. (\$3787.52, ending balance). Eric noted the correspondence from several members in response to delinquent dues notices. The Webmaster, Greg Harrington was not present to give a report.

Old Business: The Skipper said that he received e-mail from Mrs. Mastini stating that she still had a lot of material from Frank's shop remaining to be sold. The Skipper announced that Jack and Jeanne Bobbit were moving to North Carolina. Their contact information will be sent to the membership when it becomes available. Bill Dangler talked about the September picnic. Bob Comet noted that, in the past, Brad Granum had procured the meats from the commissary and was reimbursed from the treasury and the membership supplied the remaining foodstuff and necessary items. Bill passed around a list of necessary items for the picnic for the members to review. It will be presented again at he August and September meeting to allow the members to indicate what they would like to bring. Alan Frazer talked about the ship model exhibit. He said that the tentative schedule is for the exhibit is for the month of October at the Poquoson Library. The current plan is to set the exhibit up on Saturday the 29th of September and to remove it on the last Saturday of October. The Skipper announced that through the effort of Hintz Schiller, the Mariners' Museum has offered meeting space to the HRSMS with the stipulation that the meetings would have to be held during the hours when the museum as open. It was noted that to use that location the only viable meeting time would be on the weekend. After the usual amount discussion a motion was made and passed to hold HRSMS meetings at the Mariners' Museum on second Saturday of the month from 2pm - 5 pm.

New Business: Eric Harfst said the bylaws state that financial records may be reviewed at the end of the fiscal year by a committee appointed by the Skipper. Ryland Craze was asked if he would review the books. Ryland agreed and will make a report at a later date. The Skipper talked about holding an auction. There was discussion about proceeds from some larger items being split between the HRSMS and the donor. There will be more discussion about an auction at a future meeting.

Show & Tell: John Cheevers showed plans for the twin screw, z-drive tugboat *Susan Moran*. Alan Frazer showed a Leatherman tool he was given. Alan also showed the progress on the wagon for his whaleboat and a wrench he made to tighten the axel bolts.

The meeting was adjourned to a presentation "ASW in World War II", by John Wyld.

Historic Naval Ships Association



Whilst browsing the net I happened upon the web site for the Historic Naval Ships Association. Their site offers a treasure chest of information that would be useful to the nautical buff or model builder.

There are many documents and books complete with illustrations. The following is a partial list of publications taken from their web site.

Age of Sail:

The Elements and Practice of Rigging And Seamanship, 1794, by David Steel, is a first comprehensive English textbook of rigging, seamanship and naval tactics.

Textbook of Seamanship, 1891, by Commodore Luce, revised by Lieutenant Ward. A classic manual of seamanship under sail or steam from very near the end of the age of sail.

Battleship

U.S.S. New Jersey - Book of General Plans, [bbnjplans.pdf](#) (10 MB PDF)

U.S.S. Massachusetts - Brief Description of the Engineering Department is a training manual created aboard the battleship to introduce new men to the ships engineering systems.

WW II PT Boat:

Know Your PT Boat, 1945. This is an introduction to PT Boats for crews' in training.

Motor Torpedo Boats, Tactical Orders and Doctrine, 1942. This provides insight into how PT Boats where used.

Detail Specifications For Building Motor Torpedo Boats, 1944. This provides the builders specifications for PT 565-624. Numerous details about PT Boats appear in the manual that provide insight to both the technology and the life aboard PT Boats.

Gunnery

Description of Range Keeper, Mark II with Directions for its Care and Manipulation, 1908, and Specifications for the Manufacture of Range Keepers, Mark II, U.S. Navy, 1907. These describe the Vickers Range Clock as used by the US Navy. This was a key element of HMS Dreadnought era fire

(Continued on page 4)

HAMPTON ROADS SHIP MODEL SOCIETY

Guidelines and Procedures for Ship Model Exhibits

at

Libraries and Other Public Sites

1. HRSMS will—
 - a. arrange for delivery of members' models to the site at a time to be agreed on by HRSMS and the Host organization, to have at least one member present during that set-up period to assist others, and arrange with the members to produce individual informative labels for each model—
 - b. arrange for having one or more members present, when possible during the site's public hours throughout the exhibition period, to discuss the models, and ship modeling in general, with visitors—
 - c. arrange for public speakers (usually Society members) to give formal presentations on models, modeling techniques, and sources for information and materials, at scheduled public meetings, possibly evenings, during the exhibition period—
 - d. provide material for media coverage, and make members available to meet with media representatives.
2. HOST SITE will—
 - e. provide suitable space, usually counter or file tops about 40" to 50" above the floor, and preferably in the main public area rather than in a separate room; and locked glass-door cabinets, if available, for smaller models;
 - f. have a designated staff member or volunteer available to assist during installation;
 - g. provide insurance coverage for the models to a value to be set by the exhibitor;
 - h. arrange, if possible, to make space available for public speakers (usually Society members) to give formal presentations on models, modeling techniques, and sources for information and materials, at scheduled public meetings, as described in paragraph 1d, above.
3. HRSMS MEMBERS will—
 - i. draft and furnish to the exhibition committee, at least three weeks prior to delivery date, information on each model, to include (at a minimum): name, nationality, type of vessel, and year of subject vessel' construction, plus name of model builder, scale of model, year of construction, and source of kit if appropriate.
 - j. assure that each model ship or boat is safely and securely mounted on a solid base and protected by transparent plastic or glass case, the case in turn to be secured to the base (by means of screw, bolts, or other suitable devices) to avoid or reduce potential damage;
 - k. sign an entry form agreeing to hold the HRSMS and the host site harmless in case of damage or loss;
 - l. deliver their model(s) on or before the agreed installation or opening date or time;
 - m. if desired, arrange for and provide insurance coverage for their model(s) at value(s) agreed to by them and their insurers;
 - n. consider a public presentation on your model(s) or techniques at the exhibition site and during the term of the exhibition. This may be a presentation that you have given or plan to give at an HRSMS meeting, but should not be highly technical and beyond the understanding of the general audience.

The document above was submitted by Alan Frazer as a draft and will be open for discussion at the August meeting.

(Continued from page 3)

control that continued in use through WW II.



As a footnote, the director of the HNSA is quartered in Smithfield, Va.

<http://www.hnsa.org/index.htm>

Do We Have Your E-Mail Address?

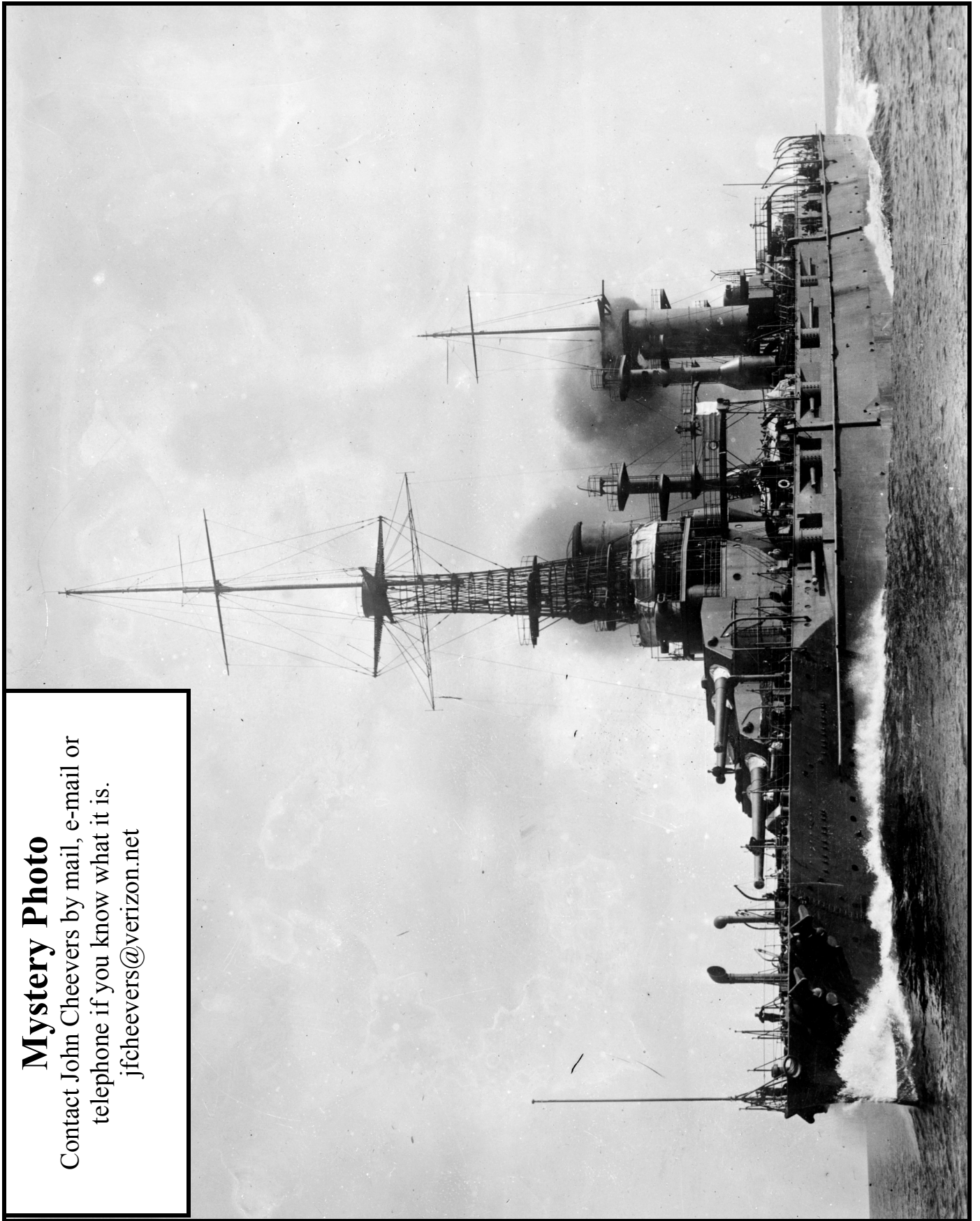
Many members have elected forgo the printed edition of the Logbook, to only receive the Logbook as a PDF document attached to a monthly e-mail. If the electronic version will satisfy your needs, you can help constrain printing and mailing costs by sending an e-mail to the editor - t.e.saunders@worldnet.att.net and indicating your preference.

HRSMS PICNIC— September 22, 2007— Newport News Park

Mystery Photo

Contact John Cheevers by mail, e-mail or
telephone if you know what it is.

jfcheevers@verizon.net



NOTABLE EVENTS

AUGUST

- 10 **HRSMS** Monthly Meeting: Host, Dean Sword
Presentation "Plastic Resin Casting Demo" by Dean Sword

SEPTEMBER

- 13-16 NRG Conference, Manitowoc, Wi.
14 **HRSMS**. Monthly Meeting:
Presentation "Building the Nashville Part II" By Bob Comet
22 **HRSMS** Picnic, Newport News Park

OCTOBER

- 12 **HRSMS**. Monthly Meeting: Host, Greg Harrington
Presentation "Making Water " by Charles Landrum

NOVEMBER

- 9 **HRSMS** Monthly Meeting: Host, Heinz Schiller
Presentation "Technique for Milling Sheer and Camber"
by John Cheevers

DECEMBER

- 14 **HRSMS** Monthly Meeting:
Presentation "Model Ship Research Via the Internet"
by John Wyld

JANUARY

- 11 **HRSMS** Monthly Meeting: Host, Bob Comet
Nomination of Officers

FEBRUARY

- 8 **HRSMS** Monthly Meeting: Host, Dave Baker
Election of Officers

MARCH

- 14 **HRSMS** Monthly Meeting

APRIL

- 11 **HRSMS** Monthly Meeting:

MAY

- 9 **HRSMS** Monthly Meeting:

JUNE

- 13 **HRSMS** Monthly Meeting:

JULY

- 13 **HRSMS** Monthly Meeting

WATCH, QUARTER AND STATION BILL



Skipper: John Cheevers (757) 591-8955
Mate: Ryland Craze (804) 739-8804
Purser: Eric Harfst (757) 221-8181
Clerk: Tom Saunders (757) 850-0580
Historian: Len Wine (757) 566-8597
Editors: John Cheevers (757) 591-8955
Bill Clarke (757) 868-6809
Tom Saunders (757) 850-0580
Webmaster: Greg Harrington (757) 930-4615

Next Meeting

Date: August 10, 2007
Place: 2 Lynn Drive, Portsmouth, Va.
Time: 2000 Hours
Host: Dean Sword



From the Peninsula West: Take I-64 East. Take the I-664 S exit- exit number 264- towards DOWNTOWN/NEWPORT NEWS /SUFFOLK /CHESAPEAKE. 0.53 miles 3: Merge onto I-664 S.12.62 miles. Take the VA-164 E/US-17 N exit- exit number 9- towards PORTSMOUTH/JAMES RIVER BR. 0.24 miles. Keep LEFT at the fork in the ramp.0.64 miles. Merge onto VA-164 E. 5.89 miles. As you cross the West Norfolk Bridge (the end of Rte. 164) you will need to follow the signs marked "Port Norfolk" (essentially you should stay in the right lane and continue to bear to the right when you have a choice). This will lead to an off ramp that dead ends on Cleveland St., which also has a stop, light. Turn right on Cleveland St. (which is also marked Port Norfolk) and go to the second traffic light which is Chautauqua Ave. Turn right on Chautauqua and go one block and turn left on Detroit Street. 8: Turn SLIGHT LEFT onto WILLIAMSON RD. 0.04 miles. Stay straight to go onto SURRY ST. 0.16 miles. Turn RIGHT onto LYNN DR. 0.35 miles.

From Virginia Beach: Take the I-264 W towards I-64/NORFOLK/I-264 W/RICHMOND. 0.32 miles. Merge onto I-264 W. 9.75 miles. Take the exit- exit number 7- towards DOWNTOWN PORTSMOUTH/NAVAL HOSPITAL/NAVAL SHIPYARD. 0.04 miles 4: Keep LEFT at the fork in the ramp. 0.09 miles. Merge onto BART ST. 0.11 miles. Turn RIGHT onto EFFINGHAM ST/VA-141. 0.37 miles. Turn LEFT onto LONDON BLVD/VA-141 N. 1.24 miles. LONDON BLVD/VA-141 N becomes LONDON BLVD/US-58 W. 0.37 miles. Turn RIGHT onto VA-164/MT VERNON AVE. 0.80 miles. Turn LEFT onto DETROIT ST. and proceed as above

